

# Human CtBP1 antibody

Catalog Number: ATGA0199

## PRODUCT INFORMATION

---

**Catalog number**

ATGA0199

**Clone No.**

AT4D6

**Product type**

Monoclonal Antibody

**UnitProt No.**

Q13363

**NCBI Accession No.**

NP\_001319

**Alternative Names**

C-terminal-binding protein 1 isoform 1, BARS, C-terminal-binding protein 1 isoform 1 C terminal binding protein 1, CTBP, CTBP1, MGC104684.

## PRODUCT SPECIFICATION

---

**Antibody Host**

Mouse

**Reacts With**

Human

**Concentration**

1mg/ml (determined by BCA assay)

**Formulation**

Liquid in. Phosphate-Buffered Saline (pH 7.4) with 0.02% Sodium Azide, 10% glycerol

**Immunogen**

Recombinant human CTBP1 (1-440aa) purified from E. coli

**Isotype**

IgG2b kappa

**Purification Note**

By protein-G affinity chromatography

**Application**

ELISA, WB, ICC/IF

**Usage**

The antibody has been tested by ELISA and Western blot analysis to assure specificity and reactivity. Since application varies, however, each investigation should be titrated by the reagent to obtain optimal results. Recommended dilution range for Western blot analysis is 1:500. Recommended starting dilution is 1:500

# Human CtBP1 antibody

Catalog Number: ATGA0199

## Storage

Can be stored at +2C to +8C for 1 week. For long term storage, aliquot and store at -20C to -80C. Avoid repeated freezing and thawing cycles.

## BACKGROUND

### Description

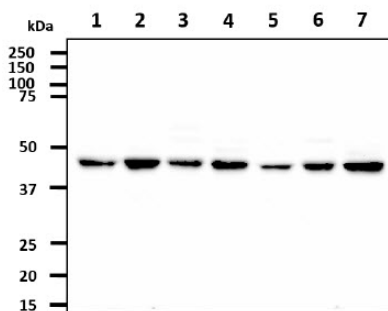
The C-terminal-binding protein (CtBP) was originally identified as a cellular protein that interacts with a C-terminal motif of adenovirus E1A oncoproteins. CtBP is highly conserved in higher eukaryotes. Vertebrates contain two highly homologous CtBP proteins (CtBP1 and CtBP2) while invertebrates contain a single CtBP. CtBP family proteins share significant sequence homology with D-2-hydroxy acid dehydrogenases. Also, CtBP proteins associate with various proteins and functions as a co-repressor of transcription.

### General References

- Katsanis N, et al. (1998). *Genomics* 47 (2): 294-9.  
Paliwal S, et al. (March 2006). *Mol. Cell. Biol.* 26 (6): 2360-72.  
Chinnadurai G (2002). *Mol. Cell* 9 (2): 213-24.

## DATA

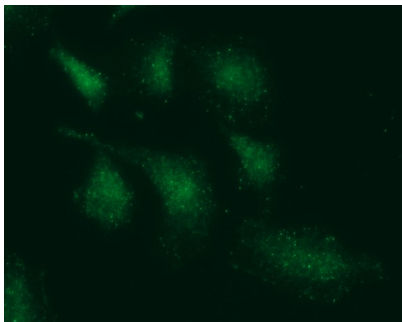
### Western blot analysis (WB)



The cell and tissue lysates (40ug) were resolved by SDS-PAGE, transferred to PVDF membrane and probed with anti-human CTBP1 antibody (1:500). Proteins were visualized using a goat anti-mouse secondary antibody conjugated to HRP and an ECL detection system.

Lane 1.: HeLa cell lysate  
Lane 2.: NIH3T3 cell lysate  
Lane 3.: 293T cell lysate  
Lane 4.: AGS cell lysate  
Lane 5.: Raji cell lysate  
Lane 6.: A549 cell lysate  
Lane 7.: Jurkat cell lysate

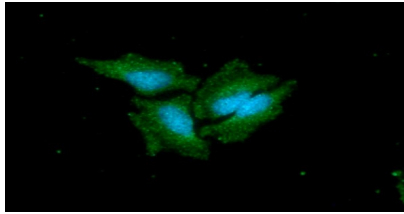
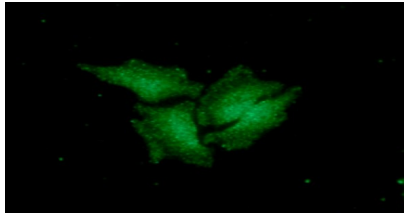
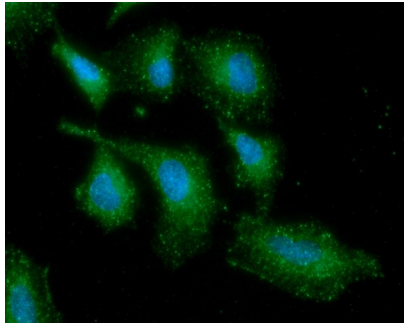
### Immunocytochemistry/Immunofluorescence (ICC/IF)



ICC/IF analysis of CTBP1 in A549 cells line, stained with DAPI (Blue) for nucleus staining and monoclonal anti-human CTBP1 antibody (1:100) with goat anti-mouse IgG-Alexa fluor 488 conjugate (Green)

## Human CtBP1 antibody

Catalog Number: ATGA0199



ICC/IF analysis of CTBP1 in HeLa cells line, stained with DAPI (Blue) for nucleus staining and monoclonal anti-human CTBP1 antibody (1:100) with goat anti-mouse IgG-Alexa fluor 488 conjugate (Green).