

# Human Calsequestrin 2/CASQ2 antibody

Catalog Number: ATGA0202

## PRODUCT INFORMATION

---

**Catalog number**

ATGA0202

**Clone No.**

AT4E10

**Product type**

Monoclonal Antibody

**UnitProt No.**

O14958

**NCBI Accession No.**

NP\_001223

**Alternative Names**

Cardiac muscle calsequestrin 2, PDIB2

## PRODUCT SPECIFICATION

---

**Antibody Host**

Mouse

**Reacts With**

Human

**Concentration**

1mg/ml (determined by BCA assay)

**Formulation**

Liquid in. Phosphate-Buffered Saline (pH 7.4) with 0.02% Sodium Azide, 10% glycerol

**Immunogen**

Recombinant human CASQ2 (20-399aa) purified from E. coli

**Isotype**

IgG1 kappa

**Purification Note**

By protein-G affinity chromatography

**Application**

ELISA, WB, ICC/IF

**Usage**

The antibody has been tested by ELISA, Western blot and ICC/IF analysis to assure specificity and reactivity. Since application varies, however, each investigation should be titrated by the reagent to obtain optimal results.

**Storage**

# Human Calsequestrin 2/CASQ2 antibody

Catalog Number: ATGA0202

Can be stored at +2C to +8C for 1 week. For long term storage, aliquot and store at -20C to -80C. Avoid repeated freezing and thawing cycles.

## BACKGROUND

### Description

CASQ2 (Calsequestrin 2) protein responsible for holding Calcium together with other two proteins junction and triadin at the sarcoplasmic reticulum renders the heart vulnerable to severe cardiac arrhythmias, known as CPVT (catecholaminergic polymorphic ventricular tachycardia), during physical exercise.

### General References

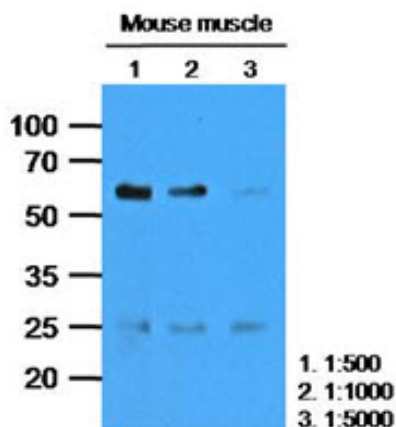
Eckstein, A.K., et al. (2006) J. Clin. Endo. and Meta. 91: 3464-3470.

Paschke, R., et al (1995) Clin. Endo. 42: 565-569.

Bahn, R.S. (2003) J. Clin. Endo. and Meta. 88: 1939-1946.

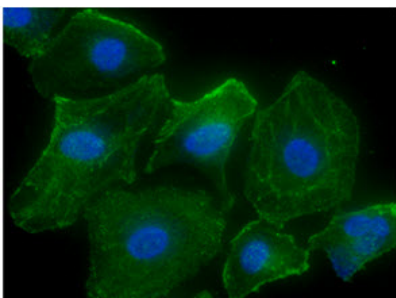
## DATA

### Western blot analysis (WB)



The tissue lysates of Mouse muscle (35ug) were resolved by SDS-PAGE, transferred to PVDF membrane and probed with anti-human CASQ2 (1:1000). Proteins were visualized using a goat anti-mouse secondary antibody conjugated to HRP and an ECL detection system.

### Immunocytochemistry/Immunofluorescence (ICC/IF)



ICC/IF analysis of CASQ2 in HeLa cells. The cell was stained with ATGA0202 (1:100). The secondary antibody (green) was used Alexa Fluor 488. DAPI was stained the cell nucleus (blue).