

# Human pan-RAS antibody

Catalog Number: ATGA0203

## PRODUCT INFORMATION

---

**Catalog number**

ATGA0203

**Clone No.**

AT2G9

**Product type**

Monoclonal Antibody

**UnitProt No.**

P01111

**NCBI Accession No.**

NP\_002515

**Alternative Names**

Neuroblastoma RAS viral (v-ras) oncogene homolog, GTPase NRas, HRAS1, ALPS4, N-ras, NRAS1, NS6, Neuroblastoma RAS viral (v-ras) oncogene homolog OTTMuSP00000023521, AV095280, N ras, N ras protein part 4, Neuroblastoma RAS viral (v ras) oncogene homolog, OTTHuMP00000013879, Transforming protein N Ras, v ras neuroblastoma RAS viral oncogene homolog

**Additional Information**

Ras Antibody detects endogenous levels of total K-Ras, H-Ras, and N-Ras(cell signaling).

## PRODUCT SPECIFICATION

---

**Antibody Host**

Mouse

**Reacts With**

Human

**Concentration**

1mg/ml (determined by BCA assay)

**Formulation**

Liquid in. Phosphate-Buffered Saline (pH 7.4) with 0.02% Sodium Azide, 10% glycerol

**Immunogen**

Recombinant human NRAS (1-186aa) purified from E. coli

**Isotype**

IgG2a kappa

**Purification Note**

By protein-G affinity chromatography

**Application**

ELISA, WB, ICC/IF, FACS

# Human pan-RAS antibody

Catalog Number: ATGA0203

## Usage

The antibody has been tested by ELISA, Western blot, ICC/IF and FACS analysis to assure specificity and reactivity. Since application varies, however, each investigation should be titrated by the reagent to obtain optimal results.

## Storage

Can be stored at +2C to +8C for 1 week. For long term storage, aliquot and store at -20C to -80C. Avoid repeated freezing and thawing cycles.

## BACKGROUND

### Description

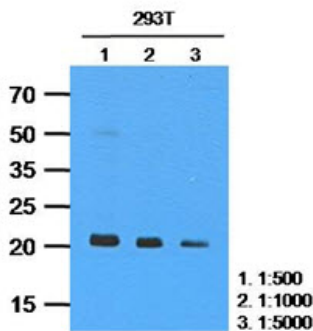
The Ras protein is a subfamily of small GTPases that are involved in signal transduction. They are activated by ligand-binding receptor tyrosine kinases such as EGFR, PDGFR, CSF and FGF. These kinases transiently convert RAS-GDP (inactive form) to RAS-GTP, the active form of RAS. The main genes are HRAS, NRAS and KRAS.

### General References

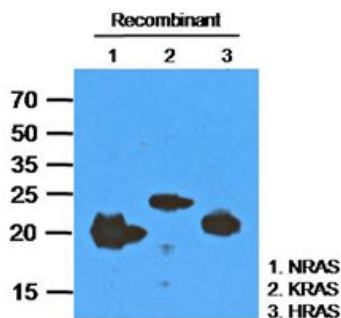
- Rocks O, et al. (2006). *Current Opinion in Cell Biology* 18 (4): 351-7.
- Wennerberg K, et al. (March 2005). *J. Cell. Sci.* 118 (Pt 5): 843-6.
- Rotblat B, et al. (2008). *Methods Enzymol* 439: 467-89.

## DATA

### Western blot analysis (WB)



The cell lysates of 293T(35ug) were resolved by SDS-PAGE, transferred to PVDF membrane and probed with anti-human RAS (1:500~1:5000). Proteins were visualized using a goat anti-mouse secondary antibody conjugated to HRP and an ECL detection system.

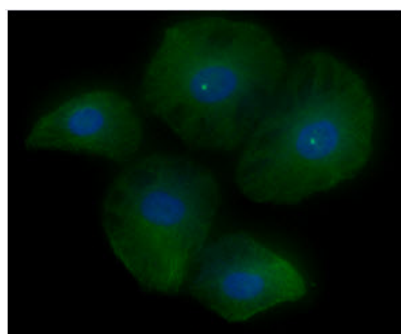


The recombinant proteins (200ng) were resolved by SDS-PAGE, transferred to PVDF membrane and probed with anti-human RAS antibody (1:1000). Proteins were visualized using a goat anti-mouse secondary antibody conjugated to HRP and an ECL detection system.  
 Lane 1.: Recombinant human NRAS protein  
 Lane 2.: Recombinant human KRAS protein  
 Lane 3.: Recombinant human HRAS protein

## Human pan-RAS antibody

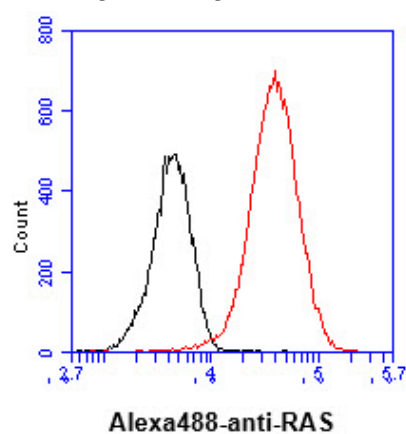
Catalog Number: ATGA0203

### Immunocytochemistry/Immunofluorescence (ICC/IF)



ICC/IF analysis of RAS in HeLa cells. The cell was stained with ATGA0203 (1:100). The secondary antibody (green) was used Alexa Fluor 488. DAPI was stained the cell nucleus (blue).

### Flow cytometry (FACS)



Flow cytometry analysis of RAS in HeLa cell line, staining at 2-5ug for  $1 \times 10^6$  cells (red line). The secondary antibody used goat anti-mouse IgG Alexa fluor 488 conjugate. Isotype control antibody was mouse IgG (black line).