

Human eIF-2 alpha/EIF2S1 antibody

Catalog Number: ATGA0208

PRODUCT INFORMATION

Catalog number

ATGA0208

Clone No.

AT5E10

Product type

Monoclonal Antibody

UnitProt No.

P05198

NCBI Accession No.

NP_004085

Alternative Names

Eukaryotic translation initiation factor 2 subunit alpha, EIF2, Eukaryotic translation initiation factor 2 subunit 1 alpha 35kDa, EIF-2alpha, EIF2A

PRODUCT SPECIFICATION

Antibody Host

Mouse

Reacts With

Human

Concentration

1mg/ml (determined by BCA assay)

Formulation

Liquid in. Phosphate-Buffered Saline (pH 7.4) with 0.02% Sodium Azide, 10% glycerol

Immunogen

Recombinant human EIF2S1 (1-315aa) purified from E. coli

Isotype

IgG2b kappa

Purification Note

By protein-G affinity chromatography

Application

ELISA, WB, ICC/IF

Usage

The antibody has been tested by ELISA, Western blot and ICC/IF analysis to assure specificity and reactivity. Since application varies, however, each investigation should be titrated by the reagent to obtain optimal results.

Human eIF-2 alpha/EIF2S1 antibody

Catalog Number: ATGA0208

Storage

Can be stored at +2C to +8C for 1 week. For long term storage, aliquot and store at -20C to -80C. Avoid repeated freezing and thawing cycles.

BACKGROUND

Description

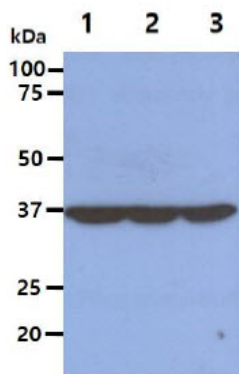
Eukaryotic translation initiation factor 2, subunit 1 alpha (EIF2S1) is plays a central role in initiating translation, and provides for a rate-limiting step in protein synthesis. The phosphorylation of alpha-subunit of EIF2S1 effectively prevents formation of the EIF2S1/GTP/Met-tRNAi complex and inhibits global protein synthesis.

General References

- Kim JH, et al. (2011). EMBO J, 1030(12):2454-64.
- Pena J, et al. (2011). J Biol Chem, 286(16):14226-36.
- Muaddi H, et al. (2010). Mol Biol Cell, 21(18):3220-31.

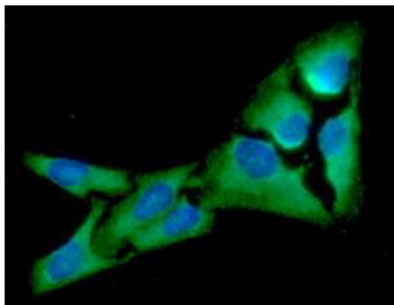
DATA

Western blot analysis (WB)



The cell lysates (40ug) were resolved by SDS-PAGE, transferred to PVDF membrane and probed with anti-human EIF2S1 antibody (1:1000). Proteins were visualized using a goat anti-mouse secondary antibody conjugated to HRP and an ECL detection system.
Lane 1.: HeLa cell lysate
Lane 2.: Jurkat cell lysate
Lane 3.: NIH-3T3 cell lysate

Immunocytochemistry/Immunofluorescence (ICC/IF)



ICC/IF analysis of EIF2S1 in HeLa cells. The cell was stained with ATGA0208 (1:100). The secondary antibody (green) was used Alexa Fluor 488. DAPI was stained the cell nucleus (blue).