

Human PKLR antibody

Catalog Number: ATGA0209

PRODUCT INFORMATION

Catalog number

ATGA0209

Clone No.

AT1E3

Product type

Monoclonal Antibody

UnitProt No.

P30613

NCBI Accession No.

NP_000289

Alternative Names

Pyruvate kinase isozymes R/L, PK1, PKL, PKR, PKRL, RPK

PRODUCT SPECIFICATION

Antibody Host

Mouse

Reacts With

Human

Concentration

1mg/ml (determined by BCA assay)

Formulation

Liquid in. Phosphate-Buffered Saline (pH 7.4) with 0.02% Sodium Azide, 10% glycerol

Immunogen

Recombinant human PKLR (47-574aa) purified from E. coli

Isotype

IgG1 kappa

Purification Note

By protein-G affinity chromatography

Application

ELISA, WB, ICC/IF

Usage

The antibody has been tested by ELISA, Western blot and ICC/IF analysis to assure specificity and reactivity. Since application varies, however, each investigation should be titrated by the reagent to obtain optimal results.

Storage

Human PKLR antibody

Catalog Number: ATGA0209

Can be stored at +2C to +8C for 1 week. For long term storage, aliquot and store at -20C to -80C. Avoid repeated freezing and thawing cycles.

BACKGROUND

Description

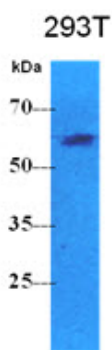
PKLR is a pyruvate kinase that catalyzes the transphosphorylation of phosphoenolpyruvate into pyruvate and ATP, which is the rate-limiting step of glycolysis. The PKLR gene encodes the L- and R-type isoenzymes through alternative splicing events under the control of different promoters. The L-type isoform also exists as a tetramer and is upregulated by glucose with implications in maturity-onset diabetes of the young.

General References

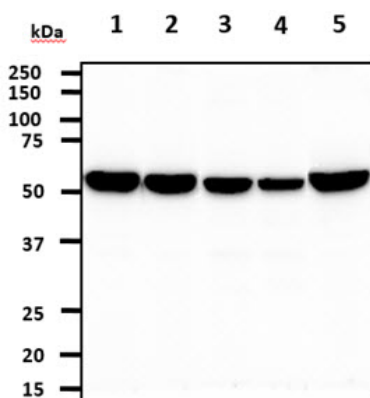
Meza NW., et al. (2009). Mol Ther. 17(12):2000-9.
Roy MF., et al. (2007). J Exp Med. 204(12):2949-61.

DATA

Western blot analysis (WB)



The cell lysate of 293T (40ug) was resolved by SDS-PAGE, transferred to PVDF membrane and probed with anti-human PKLR antibody (1:500). Proteins were visualized using a goat anti-mouse secondary antibody conjugated to HRP and an ECL detection system.



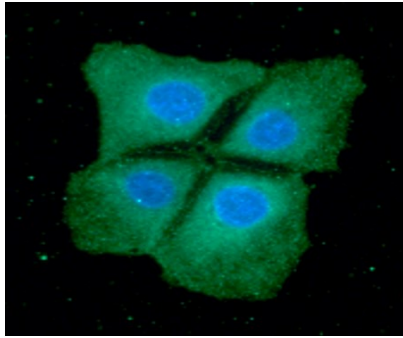
The cell lysates (40ug) were resolved by SDS-PAGE, transferred to PVDF membrane and probed with anti-human PKLR (1:500). Proteins were visualized using a goat anti-mouse secondary antibody conjugated to HRP and an ECL detection system.

Lane 1.: Balb-3T3 cell lysate
Lane 2.: HeLa cell lysate
Lane 3.: Raji cell lysate
Lane 4.: K562 cell lysate
Lane 5.: A549 cell lysate

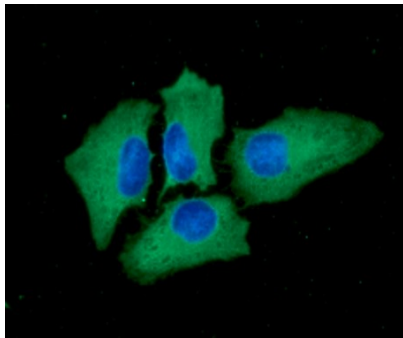
Immunocytochemistry/Immunofluorescence (ICC/IF)

Human PKLR antibody

Catalog Number: ATGA0209



ICC/IF analysis of PKLR in Hep3B cells. The cell was stained with ATGA0209 (1:100). The secondary antibody (green) was used Alexa Fluor 488. DAPI was stained the cell nucleus (blue).



ICC/IF analysis of PKLR in HeLa cells. The cell was stained with ATGA0209 (1:100). The secondary antibody (green) was used Alexa Fluor 488. DAPI was stained the cell nucleus (blue).