

# Human Apolipoprotein A1/APOA1 antibody

Catalog Number: ATGA0215

## PRODUCT INFORMATION

---

**Catalog number**

ATGA0215

**Clone No.**

AT1E12

**Product type**

Monoclonal Antibody

**UnitProt No.**

P02647

**NCBI Accession No.**

NP\_000030.1

**Alternative Names**

APOA1, apolipoprotein A-I, Apolipoprotein A1, Apo-AI, ApoA-I

## PRODUCT SPECIFICATION

---

**Antibody Host**

Mouse

**Reacts With**

Human

**Concentration**

1mg/ml (determined by BCA assay)

**Formulation**

Liquid in. Phosphate-Buffered Saline (pH 7.4) with 0.02% Sodium Azide, 10% glycerol

**Immunogen**

Recombinant human APOA1 (25-267aa) purified from E. coli

**Isotype**

IgG1 kappa

**Purification Note**

By protein-G affinity chromatography

**Application**

ELISA, WB

**Usage**

The antibody has been tested by ELISA and Western blot analysis to assure specificity and reactivity. Since application varies, however, each investigation should be titrated by the reagent to obtain optimal results.

**Storage**

# Human Apolipoprotein A1/APOA1 antibody

Catalog Number: ATGA0215

Can be stored at +2C to +8C for 1 week. For long term storage, aliquot and store at -20C to -80C. Avoid repeated freezing and thawing cycles.

## BACKGROUND

### Description

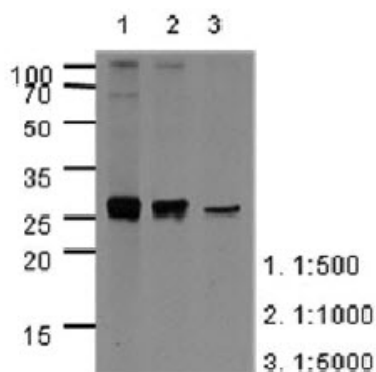
Apolipoprotein A1 (APOA1) is the main protein component of high density lipoprotein (HDL) in plasma. This protein promotes cholesterol efflux from tissues to the liver for excretion, and it is a cofactor for lecithin cholesterolacyltransferase (LCAT) which is responsible for the formation of most plasma cholesteryl esters. Defects in APOA1 are associated with HDL deficiencies, including Tangier disease, and with systemic non-neuropathic amyloidosis. High level of APOA1 is regarded as protective against atherosclerosis and cardiovascular disease.

### General References

Dastani Z, et al. (March 2006). *Atherosclerosis* 185 (1): 127-36.  
Chiesa G, Sirtori CR (2003). *Curr. Opin. Lipidol.* 14 (2): 159-63.  
Pussinen, et al. (Jan. 1998). *J. Lipid Res. (UNITED STATES)* 39 (1): 152-61.

## DATA

### Western blot analysis (WB)



The cell lysates of HepG2(40ug) were resolved by SDS-PAGE, transferred to PVDF membrane and probed with anti-human APOA1 (1:500 ~ 1:5000). Proteins were visualized using a goat anti-mouse secondary antibody conjugated to HRP and an ECL detection system.