

# Human Cyclophilin C antibody

Catalog Number: ATGA0218

## PRODUCT INFORMATION

---

**Catalog number**

ATGA0218

**Clone No.**

AT3C6

**Product type**

Monoclonal Antibody

**UnitProt No.**

P45877

**NCBI Accession No.**

NP\_000934

**Alternative Names**

Cyclophilin C, CYPC, Peptidyl prolyl cis trans isomerase C, Peptidyl-prolyl cis-trans isomerase C, PPlase C, Rotamase C, PPIC

## PRODUCT SPECIFICATION

---

**Antibody Host**

Mouse

**Reacts With**

Human

**Concentration**

1mg/ml (determined by BCA assay)

**Formulation**

Liquid in. Phosphate-Buffered Saline (pH 7.4) with 0.02% Sodium Azide, 10% glycerol

**Immunogen**

Recombinant human PPIC (39-197aa) protein purified from E. coli

**Isotype**

IgG2b kappa

**Purification Note**

By protein-G affinity chromatography

**Application**

ELISA, WB, ICC/IF, FACS

**Usage**

The antibody has been tested by ELISA, Western blot, ICC/IF and FACS analysis to assure specificity and reactivity. Since application varies, however, each investigation should be titrated by the reagent to obtain optimal results.

# Human Cyclophilin C antibody

Catalog Number: ATGA0218

## Storage

Can be stored at +2C to +8C for 1 week. For long term storage, aliquot and store at -20C to -80C. Avoid repeated freezing and thawing cycles.

## BACKGROUND

### Description

PPIC is a member of the peptidyl-prolyl cis-trans isomerase (PPIase) family. PPIases catalyze the cis-trans isomerization of proline imidic peptide bonds in oligopeptides and accelerate the folding of proteins. Similar to other PPIases, this protein can bind immunosuppressant cyclosporin A.

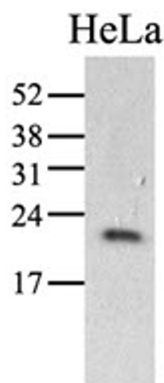
### General References

Takahashi, N., et al. (1989). Nature (London) 337, 473-475.

Fischer, G., et al. (1989). Nature (London) 337, 476-478.

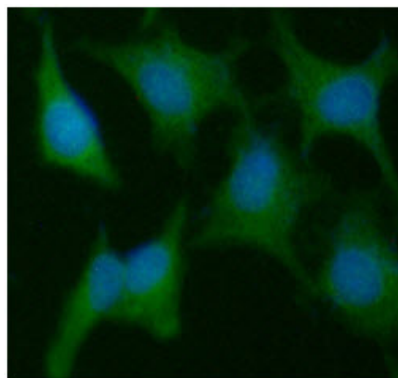
## DATA

### Western blot analysis (WB)



The cell lysate of HeLa (40ug) was resolved by SDS-PAGE, transferred to PVDF membrane and probed with anti-human PPIC antibody (1:1000). Proteins were visualized using a goat anti-mouse secondary antibody conjugated to HRP and an ECL detection system.

### Immunofluorescence (ICC/IF)

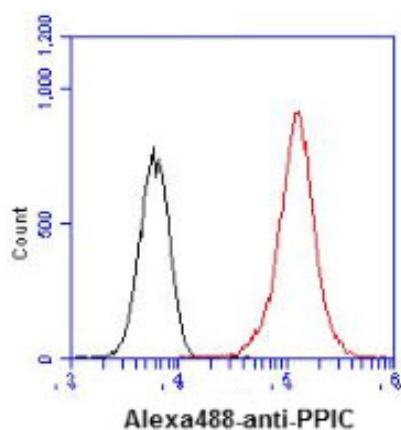


ICC/IF analysis of PPIC in HeLa cells. The cell was stained with ATGA0218 (1:100). The secondary antibody (green) was used Alexa Fluor 488. DAPI was stained the cell nucleus (blue).

### Flow cytometry (FACS)

## Human Cyclophilin C antibody

Catalog Number: ATGA0218



Flow cytometry analysis of PPIC in HeLa cell line, staining at 2-5ug for  $1 \times 10^6$  cells (red line). The secondary antibody used goat anti-mouse IgG Alexa fluor 488 conjugate. Isotype control antibody was mouse IgG (black line).