

Human GIPC1/2 antibody

Catalog Number: ATGA0223

PRODUCT INFORMATION

Catalog number

ATGA0223

Clone No.

AT1G10

Product type

Monoclonal Antibody

UnitProt No.

Q8TF65

NCBI Accession No.

NP_060125.4

Alternative Names

PDZ domain containing family member 2, SEMCAP2

PRODUCT SPECIFICATION

Antibody Host

Mouse

Reacts With

Human

Concentration

1mg/ml (determined by BCA assay)

Formulation

Liquid in. Phosphate-Buffered Saline (pH 7.4) with 0.02% Sodium Azide, 10% glycerol

Immunogen

Recombinant human GIPC2 (1-315aa) purified from E. coli

Isotype

IgG1 kappa

Purification Note

By protein-G affinity chromatography

Application

ELISA, WB, FACS

Usage

The antibody has been tested by ELISA, Western blot and FACS analysis to assure specificity and reactivity. Since application varies, however, each investigation should be titrated by the reagent to obtain optimal results.

Storage

Human GIPC1/2 antibody

Catalog Number: ATGA0223

Can be stored at +2C to +8C for 1 week. For long term storage, aliquot and store at -20C to -80C. Avoid repeated freezing and thawing cycles.

BACKGROUND

Description

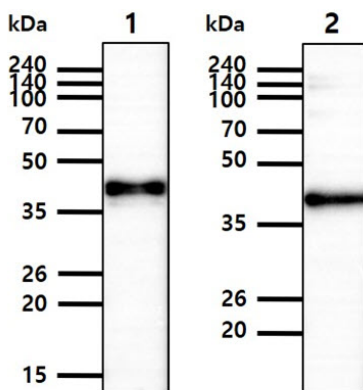
GIPC, GAIP interacting protein at the C terminus, is a PDZ domain containing protein that interacts with RGS-GAIP. GIPC was also identified as TIP-2, a protein that interacts with the viral oncoprotein TAX, which transactivates viral and cellular promoters through interactions with various transcription factors. GIPC specifically localizes to clusters of vesicles near the plasma membrane and participates in G protein-coupled signaling pathway involved in regulating clathrin-coated vesicular trafficking. GIPC also associates with membrane bound semaphorin F (M-SemF), which is involved in neuronal axon growth, and it appears to regulate the subcellular distribution of M-SemF in the brain.

General References

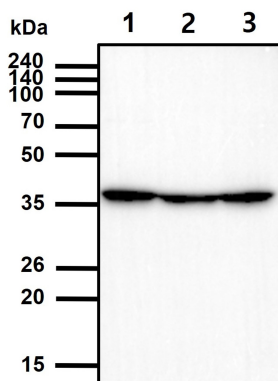
- De Vries L., et al. (1998). Proc Natl Acad Sci U S A 95 (21): 12340-5.
- Liu T F, Kandala G, Setaluri V (2001). J. Biol. Chem. (United States) 276 (38): 35768-77.
- Hu, Liaoyuan A., et al. (2003). J. Biol. Chem. (United States) 278 (28): 26295-301.

DATA

Western blot analysis (WB)



The recombinant proteins (50ng) were resolved by SDS-PAGE, transferred to PVDF membrane and probed with anti-human GIPC antibody (1:1000). Proteins were visualized using a goat anti-mouse secondary antibody conjugated to HRP and an ECL detection system.
 Lane 1.: GIPC1 recombinant protein
 Lane 2.: GIPC2 recombinant protein

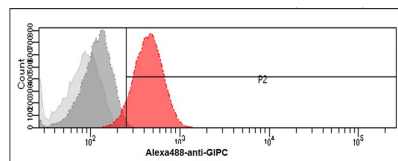


The cell lysates (40ug) were resolved by SDS-PAGE, transferred to PVDF membrane and probed with anti-human GIPC antibody (1:1000). Proteins were visualized using a goat anti-mouse secondary antibody conjugated to HRP and an ECL detection system.
 Lane 1.: 293T cell lysate
 Lane 2.: HepG2 cell lysate
 Lane 3.: HeLa cell lysate

Flow cytometry (FACS)

Human GIPC1/2 antibody

Catalog Number: ATGA0223



Flow cytometry analysis of GIPC in HeLa cells. The cell was stained with ATGA0223 at 2-5ug for 1×10^6 cells (red). A Goat anti mouse IgG (Alexa fluor 488) was used as the secondary antibody. Mouse monoclonal IgG was used as the isotype control (dark gray), cells without incubation with primary and secondary antibody was used as the negative control (light gray).