

Human MEMO1 antibody

Catalog Number: ATGA0230

PRODUCT INFORMATION

Catalog number

ATGA0230

Clone No.

AT1E9

Product type

Monoclonal antibody

UnitProt No.

Q9Y316

NCBI Accession No.

NP_057039

Alternative Names

Protein MEMO1, C2orf4, CGI-27, MEMO, NS5ATP7

PRODUCT SPECIFICATION

Antibody Host

Mouse

Reacts With

Human

Concentration

1mg/ml (determined by BCA assay)

Formulation

Liquid in. Phosphate-Buffered Saline (pH 7.4) with 0.02% Sodium Azide, 10% glycerol

Immunogen

Recombinant human MEMO1 (1-297aa) purified from E. coli

Isotype

IgG1 kappa

Purification Note

By protein-G affinity chromatography

Application

ELISA, WB, FACS

Usage

The antibody has been tested by ELISA, Western blot and FACS analysis to assure specificity and reactivity. Since application varies, however, each investigation should be titrated by the reagent to obtain optimal results.

Storage

Human MEMO1 antibody

Catalog Number: ATGA0230

Can be stored at +2C to +8C for 1 week. For long term storage, aliquot and store at -20C to -80C. Avoid repeated freezing and thawing cycles.

BACKGROUND

Description

MEMO1 (Mediator of ErbB2-driven cell motility 1) is a 297 amino acid protein. It is thought to relax extracellular chemotactic signals that are targeted at the microtubule cytoskeleton, thereby controlling cell migration. Additionally, MEMO1 is required for breast carcinoma migration, suggesting an important role in tumorigenesis. The MEMO1-RHOA-DIAPH1 signaling pathway plays an important role in ERBB2-dependent stabilization of microtubules at the cell cortex. It controls the localization of APC and CLASP2 to the cell membrane, via the regulation of GSK3B activity.

General References

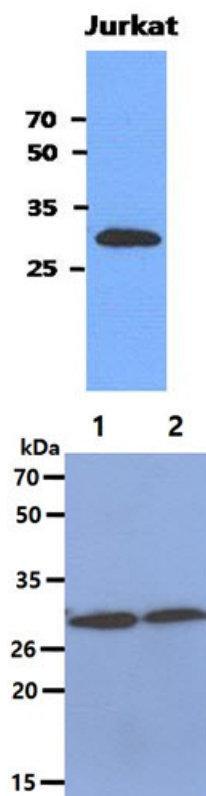
Marone R., et al. (2004) Nat Cell Biol 6(6):515-522

Meira M., et al. (2009) J Cell Sci 122:787-797

Zaoui K., et al. (2010) Proc Natl Acad Sci USA 107(43):18517-18522

DATA

Western blot analysis (WB)



The cell lysate of Jurkat (40ug) was resolved by SDS-PAGE, transferred to PVDF membrane and probed with anti-human MEMO1 antibody (1:3000). Proteins were visualized using a goat anti-mouse secondary antibody conjugated to HRP and an ECL detection system.

The lysates (40ug) were resolved by SDS-PAGE, transferred to PVDF membrane and probed with anti-human MEMO1 antibody (1:3000). Proteins were visualized using a goat anti-mouse secondary antibody conjugated to HRP and an ECL detection system.

Lane 1.: U87MG cell lysate

Lane 2.: Mouse brain tissue lysate

Flow cytometry (FACS)

Human MEMO1 antibody

Catalog Number: ATGA0230

Flow cytometry analysis of MEMO1 in U87MG cell line, staining at 2-5ug for 1×10^6 cells. The secondary antibody used goat anti-mouse IgG Alexa fluor 488 conjugate.

