

# Human CMBL antibody

Catalog Number: ATGA0233

## PRODUCT INFORMATION

---

**Catalog number**

ATGA0233

**Clone No.**

AT2B11

**Product type**

Monoclonal Antibody

**UnitProt No.**

Q96DG6

**NCBI Accession No.**

NP\_620164

**Alternative Names**

Carboxymethylenebutenolidase homolog

## PRODUCT SPECIFICATION

---

**Antibody Host**

Mouse

**Reacts With**

Human

**Concentration**

1mg/ml (determined by BCA assay)

**Formulation**

Liquid in. Phosphate-Buffered Saline (pH 7.4) with 0.02% Sodium Azide, 10% glycerol

**Immunogen**

Recombinant human CMBL (1-245aa) purified from E. coli

**Isotype**

IgG2a kappa

**Purification Note**

By protein-G affinity chromatography

**Application**

ELISA, WB

**Usage**

The antibody has been tested by ELISA and Western blot analysis to assure specificity and reactivity. Since application varies, however, each investigation should be titrated by the reagent to obtain optimal results.

**Storage**

# Human CMBL antibody

Catalog Number: ATGA0233

Can be stored at +2C to +8C for 1 week. For long term storage, aliquot and store at -20C to -80C. Avoid repeated freezing and thawing cycles.

## BACKGROUND

### Description

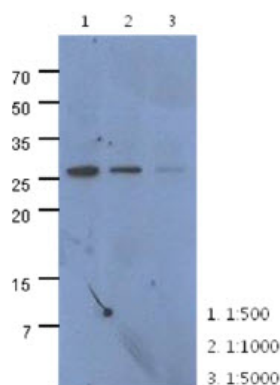
CMBL (carboxymethylenebutenolidase homolog) is a 245 amino acid cytosolic protein and cysteine hydrolase of the dienelactone hydrolase family that is highly expressed in liver cytosol. CMBL is the human homolog of *Pseudomonas* dienelactone hydrolase, a protein that participates in the bacterial halocatechol degradation pathway. That is ubiquitously expressed with high expression in liver, colon, kidney and small intestine, where it acts as a bioactivating enzyme for a prodrug type angiotensin II type 1 receptor antagonist known as olmesartan medoxomil. CMBL is inhibited by p-chloromercuribenzoate (PCMB).

### General References

Ishizuka T, et al. (Apr 2010). *J Biol Chem*. 16285(16):11892-902.  
Yang X, et al. (Mar 2010). *J Proteome Res*. 59(3):1402-15.

## DATA

### Western blot analysis (WB)



The cell lysates of HeLa (40ug) were resolved by SDS-PAGE, transferred to PVDF membrane and probed with anti-human CMBL antibody (1:500 ~ 1:5000). Proteins were visualized using a goat anti-mouse secondary antibody conjugated to HRP and an ECL detection system.