

# Human PAIP2 antibody

Catalog Number: ATGA0234

## PRODUCT INFORMATION

---

**Catalog number**

ATGA0234

**Clone No.**

AT1C12

**Product type**

Monoclonal Antibody

**UnitProt No.**

Q9BPZ3

**NCBI Accession No.**

NP\_057564

**Alternative Names**

Poly(A)-binding protein-interacting protein 2, PAIP2A, PABP- interacting protein 2, HSPC218, Poly(A)-binding protein-interacting protein 2 poly(A) binding protein interacting protein 2

## PRODUCT SPECIFICATION

---

**Antibody Host**

Mouse

**Reacts With**

Human

**Concentration**

1mg/ml (determined by BCA assay)

**Formulation**

Liquid in. Phosphate-Buffered Saline (pH 7.4) with 0.02% Sodium Azide, 10% glycerol

**Immunogen**

Recombinant human PAIP2 (1-127aa) purified from E. coli

**Isotype**

IgG2b kappa

**Purification Note**

By protein-G affinity chromatography

**Application**

ELISA, WB

**Usage**

The antibody has been tested by ELISA and Western blot analysis to assure specificity and reactivity. Since application varies, however, each investigation should be titrated by the reagent to obtain optimal results.

# Human PAIP2 antibody

Catalog Number: ATGA0234

## Storage

Can be stored at +2C to +8C for 1 week. For long term storage, aliquot and store at -20C to -80C. Avoid repeated freezing and thawing cycles.

## BACKGROUND

### Description

PAIP2 (Poly (A) -binding protein-interacting protein 2) is a 127 amino acid protein. PAIP binds to the polyadenylate-binding protein (PABP). There are two PAIP proteins called PAIP1 and PAIP2. PAIP2 acts as a repressor in the regulation of translation initiation of poly (A) -containing mRNAs. and Paip1 stimulates translation. PAIP2 contains two binding sites for PABP, one encompassing a 16-amino-acid stretch located in the C terminus and a second encompassing a larger central region.

### General References

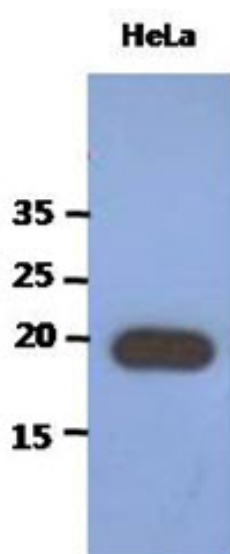
Khaleghpour, K., et al. (2001) Mol Cell Biol 7: 205-216.

Khaleghpour, K., et al. (2001) Cell Biol 21: 5200-5213.

vitkin, Y.V., et al. (2001) RNA 7: 1743-1752.

## DATA

### Western blot analysis (WB)



The cell lysate of HeLa (40ug) was resolved by SDS-PAGE, transferred to PVDF membrane and probed with anti-human PAIP2 antibody (1:1000). Proteins were visualized using a goat anti-mouse secondary antibody conjugated to HRP and an ECL detection system.