

Human CNDP2/CPGL antibody

Catalog Number: ATGA0236

PRODUCT INFORMATION

Catalog number

ATGA0236

Clone No.

AT15E5

Product type

Monoclonal antibody

UnitProt No.

Q96KP4

NCBI Accession No.

NP_060705

Alternative Names

Cytosolic non-specific dipeptidase, CN2, CPGL, HsT2298, PEPA

PRODUCT SPECIFICATION

Antibody Host

Mouse

Reacts With

Human

Concentration

1mg/ml (determined by BCA assay)

Formulation

Liquid in. Phosphate-Buffered Saline (pH 7.4) with 0.02% Sodium Azide, 10% glycerol

Immunogen

Recombinant human CNDP2 (1-475aa) purified from E. coli

Isotype

IgG1 kappa

Purification Note

By protein-G affinity chromatography

Application

ELISA, WB, ICC/IF

Usage

The antibody has been tested by ELISA, Western blot and ICC/IF analysis to assure specificity and reactivity. Since application varies, however, each investigation should be titrated by the reagent to obtain optimal results.

Storage

Human CNDP2/CPGL antibody

Catalog Number: ATGA0236

Can be stored at +2C to +8C for 1 week. For long term storage, aliquot and store at -20C to -80C. Avoid repeated freezing and thawing cycles.

BACKGROUND

Description

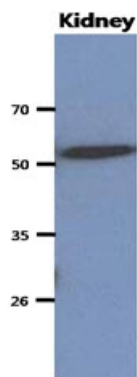
CNDP2, known as tissue carnosinase and peptidase A, is a nonspecific dipeptidase rather than a selective carnosinase and is a secreted peptidase homologous to M20 peptidases. Also known as glutamate carboxypeptidase-like protein 1 (CPGL), CNDP2 is ubiquitously expressed throughout human tissue. CNDP2 Hydrolyzes a variety of dipeptides including L-carnosine but has a strong preference for Cys-Gly and may be play a role as tumor suppressor in hepatocellular carcinoma (HCC) cells.

General References

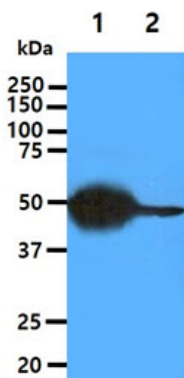
Zhang, P., et al. (2006) Cancer res 12: 6617-6625
Kaur, H., et al. (2009) J.Biol.Chem 284: 14493-14502
Licker, V., et al. (2012) J proteomics 375(15): 4656-67

DATA

Western blot analysis (WB)



The tissue lysate of mouse kidney (40ug) was resolved by SDS-PAGE, transferred to PVDF membrane and probed with anti-human CNDP2/CPGL antibody (1:1000). Proteins were visualized using a goat anti-mouse secondary antibody conjugated to HRP and an ECL detection system.



The lysates (40ug) were resolved by SDS-PAGE, transferred to PVDF membrane and probed with anti-human CNDP2/CPGL antibody (1:1000). Proteins were visualized using a goat anti-mouse secondary antibody conjugated to HRP and an ECL detection system.

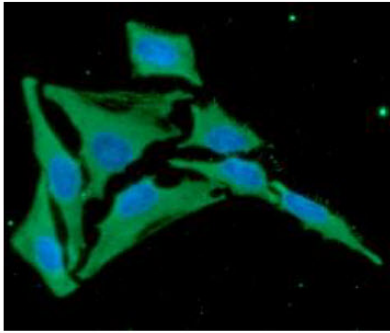
Lane 1.: Mouse liver tissue lysate

Lane 2.: HepG2 cell lysate

Immunocytochemistry/Immunofluorescence (ICC/IF)

Human CNDP2/CPGL antibody

Catalog Number: ATGA0236



ICC/IF analysis of CNDP2/CPGL in HeLa cells. The cell was stained with ATGA0236 (1:100). The secondary antibody (green) was used Alexa Fluor 488. DAPI was stained the cell nucleus (blue).