

Human SAR1B antibody

Catalog Number: ATGA0241

PRODUCT INFORMATION

Catalog number

ATGA0241

Clone No.

AT1C7

Product type

Monoclonal Antibody

UnitProt No.

Q9Y6B6

NCBI Accession No.

NP_057187

Alternative Names

GTP-binding protein SAR1b, ANDD, CMRD, GTBPB, SARA2

PRODUCT SPECIFICATION

Antibody Host

Mouse

Reacts With

Human

Concentration

1mg/ml (determined by BCA assay)

Formulation

Liquid in. Phosphate-Buffered Saline (pH 7.4) with 0.02% Sodium Azide, 10% glycerol

Immunogen

Recombinant human SAR1B (1-198aa) purified from E. coli

Isotype

IgG1 kappa

Purification Note

By protein-A affinity chromatography

Application

ELISA, WB, ICC/IF, FACS

Usage

The antibody has been tested by ELISA, Western blot, ICC/IF and FACS analysis to assure specificity and reactivity. Since application varies, however, each investigation should be titrated by the reagent to obtain optimal results.

Human SAR1B antibody

Catalog Number: ATGA0241

Storage

Can be stored at +2C to +8C for 1 week. For long term storage, aliquot and store at -20C to -80C. Avoid repeated freezing and thawing cycles.

BACKGROUND

Description

SAR1B (GTP-binding protein SAR1b) is 198 amino acid protein. SAR1B is involved in transport from the endoplasmic reticulum to the Golgi apparatus. This protein is activated by the guanine nucleotide exchange factor PREB. It is involved in the selection of the protein cargo and the assembly of the COPII coat complex. Mutations in the SAR1B gene are associated with CMRD which is autosomal recessive disorder of severe fat malabsorption.

General References

- Jones, B., et al. (2003) Nat Genet 34(1): 29-31.
Annesi, G., et al. (2007) Clin Genet 71(3): 288-9.
Treepongkaruna, S., et al. (2009) J Pediatr Gastroenterol Nutr 48(3): 370-3.

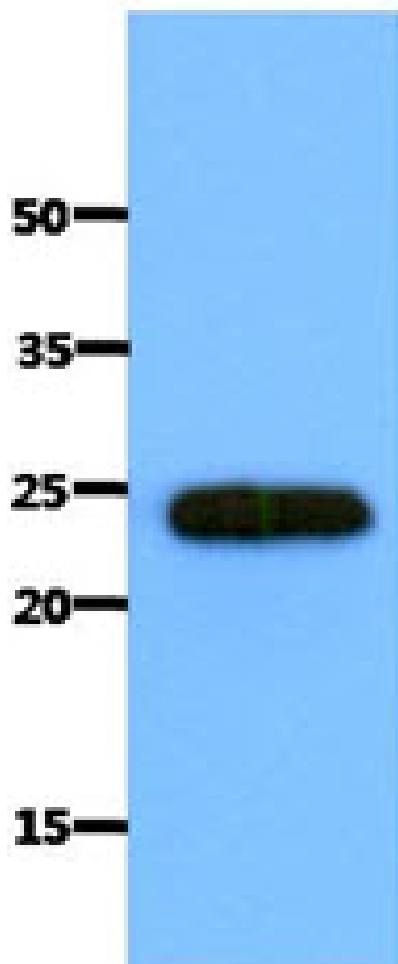
DATA

Western blot analysis (WB)

Human SAR1B antibody

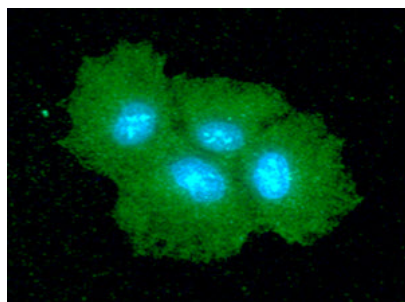
Catalog Number: ATGA0241

Muscle



The tissue lysate of Mouse muscle (40ug) was resolved by SDS-PAGE, transferred to PVDF membrane and probed with anti-human SAR1B antibody (1:1000). Proteins were visualized using a goat anti-mouse secondary antibody conjugated to HRP and an ECL detection system.

Immunocytochemistry/Immunofluorescence (ICC/IF)

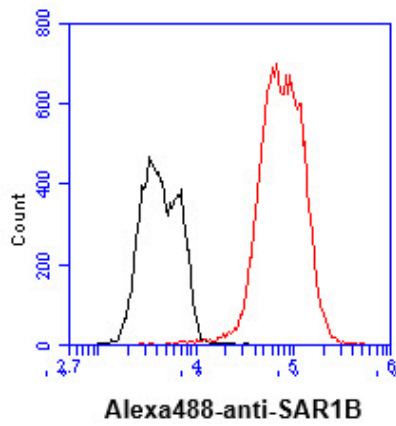


ICC/IF analysis of SAR1B in Hep3B cells. The cell was stained with ATGA0241 (1:100). The secondary antibody (green) was used Alexa Fluor 488. DAPI was stained the cell nucleus (blue).

Flow cytometry (FACS)

Human SAR1B antibody

Catalog Number: ATGA0241



Flow cytometry analysis of SAR1B in Hep3B cell line, staining at 2-5ug for 1×10^6 cells (red line). The secondary antibody used goat anti-mouse IgG Alexa fluor 488 conjugate. Isotype control antibody was mouse IgG (black line).