

# Human CISD1 antibody

Catalog Number: ATGA0242

## PRODUCT INFORMATION

---

**Catalog number**

ATGA0242

**Clone No.**

AT1A8

**Product type**

Monoclonal Antibody

**UnitProt No.**

Q9NZ45

**NCBI Accession No.**

NP\_060934

**Alternative Names**

DGSH iron-sulfur domain-containing protein 1, Cysteine transaminase CISD1

## PRODUCT SPECIFICATION

---

**Antibody Host**

Mouse

**Reacts With**

Human

**Concentration**

1mg/ml (determined by BCA assay)

**Formulation**

Liquid in. Phosphate-Buffered Saline (pH 7.4) with 0.02% Sodium Azide, 10% glycerol

**Immunogen**

Recombinant human CISD1 (32-108aa) purified from E. coli

**Isotype**

IgG1 kappa

**Purification Note**

By protein-A affinity chromatography

**Application**

ELISA, WB, FACS

**Usage**

The antibody has been tested by ELISA, Western blot and FACS analysis to assure specificity and reactivity. Since application varies, however, each investigation should be titrated by the reagent to obtain optimal results.

**Storage**

# Human CISD1 antibody

Catalog Number: ATGA0242

Can be stored at +2C to +8C for 1 week. For long term storage, aliquot and store at -20C to -80C. Avoid repeated freezing and thawing cycles.

## BACKGROUND

### Description

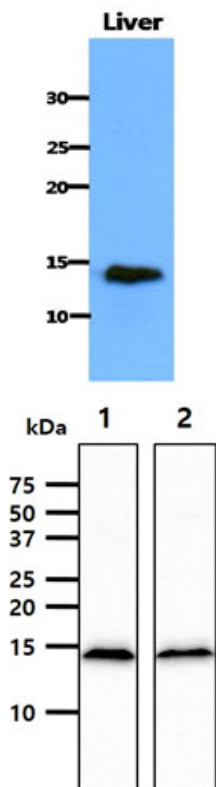
CISD1 (CDGSH iron-sulfur domain-containing protein 1) is 108 amino acid protein. CISD1 plays a key role in regulating maximal capacity for electron transport and oxidative phosphorylation. May be involved in Fe-S cluster shuttling and/or in redox reactions. This protein expression is reduced in cells derived from cystic fibrosis patients.

### General References

- Wiley, S.E., et al. (2007) J Biol Chem 282: 23745-23749.
- Paddock, M.L., et al. (2007) Proc Natl Acad Sci USA 104: 14342-14347.
- Taminelli, G.L., et al. (2008) Biochem Biophys Res Commun 365: 856-862.

## DATA

### Western blot analysis (WB)



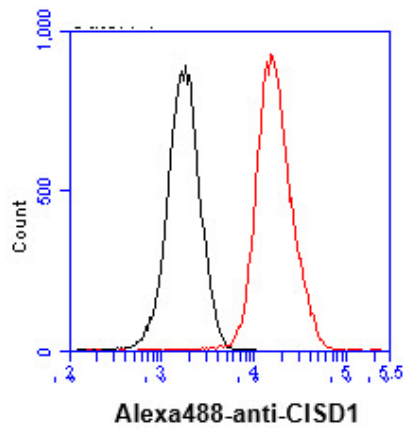
The tissue lysate of Mouse liver (40ug) was resolved by SDS-PAGE, transferred to PVDF membrane and probed with anti-human CISD1 antibody (1:1000). Proteins were visualized using a goat anti-mouse secondary antibody conjugated to HRP and an ECL detection system.

The cell lysates (40ug) were resolved by SDS-PAGE, transferred to PVDF membrane and probed with anti-human CISD1 antibody (1:1000). Proteins were visualized using a goat anti-mouse secondary antibody conjugated to HRP and an ECL detection system.  
Lane 1.: K562 cell lysate  
Lane 2.: MCF7 cell lysate

### Flow cytometry (FACS)

## Human C1SD1 antibody

Catalog Number: ATGA0242



Flow cytometry analysis of C1SD1 in THP-1 cell line, staining at 2-5ug for  $1 \times 10^6$  cells (red line). The secondary antibody used goat anti-mouse IgG Alexa fluor 488 conjugate. Isotype control antibody was mouse IgG (black line).