

Human alpha-Synuclein antibody

Catalog Number: ATGA0244

PRODUCT INFORMATION

Catalog number

ATGA0244

Clone No.

AT1E10

Product type

Monoclonal Antibody

UnitProt No.

P37840

NCBI Accession No.

NP_000336

Alternative Names

SNCA, NACP, PARK1, PARK4, PD1, α -synuclein Non-A beta component of AD amyloid, Non-A4 component of amyloid precursor, Parkinson disease 4, autosomal dominant Lewy body

PRODUCT SPECIFICATION

Antibody Host

Mouse

Reacts With

Human

Concentration

1mg/ml (determined by BCA assay)

Formulation

Liquid in. Phosphate-Buffered Saline (pH 7.4) with 0.02% Sodium Azide, 10% glycerol

Immunogen

Recombinant human alpha-synuclein (1-140aa) purified from E. coli

Isotype

IgG1 kappa

Purification Note

By protein-A affinity chromatography

Application

ELISA, WB, ICC/IF

Usage

The antibody has been tested by ELISA, Western blot and ICC/IF analysis to assure specificity and reactivity. Since application varies, however, each investigation should be titrated by the reagent to obtain optimal results.

Human alpha-Synuclein antibody

Catalog Number: ATGA0244

Storage

Can be stored at +2C to +8C for 1 week. For long term storage, aliquot and store at -20C to -80C. Avoid repeated freezing and thawing cycles.

BACKGROUND

Description

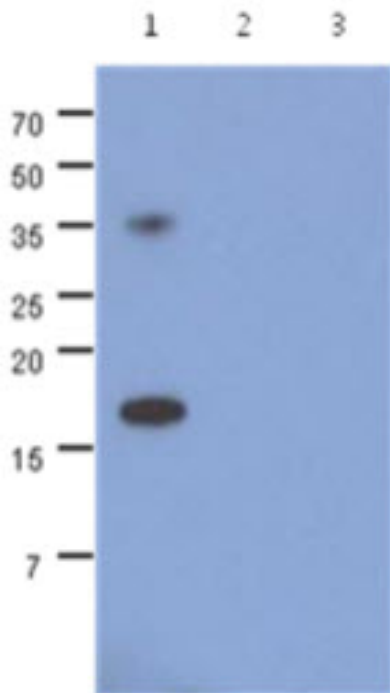
Alpha-synuclein (amino acids 1-140), an acidic neuronal protein of 140 amino acids, is extremely heat-resistant and is natively unfolded with an extended structure primarily composed of random coils. alpha-synuclein has been suggested to be implicated in the pathogenesis of Parkinson's disease and related neurodegenerative disorders, and more recently, to be an important regulatory component of vesicular transport in neuronal cells.

General References

- Jakes, R., et al. (1994) FEBS lett. 345:27-32.
- Ueda, K., et al. (1993) Proc. Natl.Acad. Sci. USA 90:11282-11286.
- Kim, J. (1997) Molecules and Cells 7:78-83.

DATA

Western blot analysis (WB)

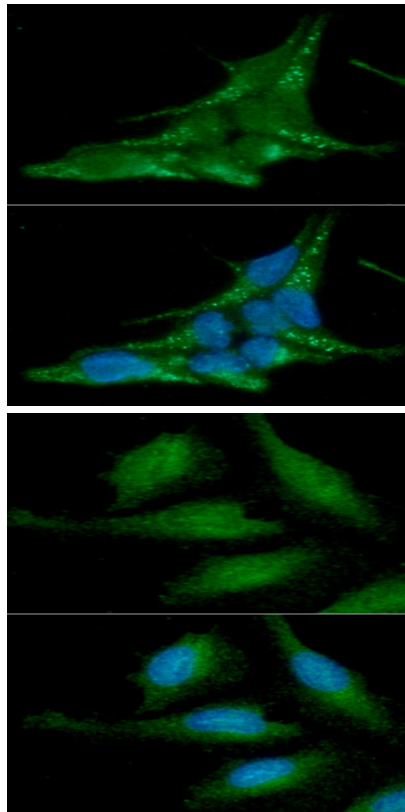


The recombinant human synuclein family (alpha-, beta- and gamma-) proteins (100ng) were resolved by SDS-PAGE, transferred to PVDF membrane and probed with anti-human alpha-synuclein antibody (1:500). Proteins were visualized using a goat anti-mouse secondary antibody conjugated to HRP and an ECL detection system.
Lane 1.: alpha-synuclein
Lane 2.: beta-synuclein
Lane 3.: gamma-synuclein

Immunocytochemistry/Immunofluorescence (ICC/IF)

Human alpha-Synuclein antibody

Catalog Number: ATGA0244



ICC/IF analysis of alpha-synuclein in LnCap cells. The cell was stained with ATGA0244 (1:100). The secondary antibody (green) was used Alexa Fluor 488. DAPI was stained the cell nucleus (blue).

ICC/IF analysis of alpha-synuclein in HeLa cells. The cell was stained with ATGA0244 (1:100). The secondary antibody (green) was used Alexa Fluor 488. DAPI was stained the cell nucleus (blue).