

# Human Keratin 8/KRT8 antibody

Catalog Number: ATGA0253

## PRODUCT INFORMATION

---

**Catalog number**

ATGA0253

**Clone No.**

AT3D11

**Product type**

Monoclonal Antibody

**UnitProt No.**

P05787

**NCBI Accession No.**

NP\_002264

**Alternative Names**

KO, Keratin type II cytoskeletal 8, Keratin 8, K8, K2C8, CYK8, CK8, CARD2

## PRODUCT SPECIFICATION

---

**Antibody Host**

Mouse

**Reacts With**

Human

**Concentration**

1mg/ml (determined by BCA assay)

**Formulation**

Liquid in. Phosphate-Buffered Saline (pH 7.4) with 0.02% Sodium Azide, 10% glycerol

**Immunogen**

Recombinant human KRT8 (1-483aa) purified from E. coli

**Isotype**

IgG3 kappa

**Purification Note**

By protein-A affinity chromatography

**Application**

ELISA, WB, ICC/IF, FACS

**Usage**

The antibody has been tested by ELISA, Western blot, ICC/IF and FACS analysis to assure specificity and reactivity. Since application varies, however, each investigation should be titrated by the reagent to obtain optimal results.

# Human Keratin 8/KRT8 antibody

Catalog Number: ATGA0253

## Storage

Can be stored at +2C to +8C for 1 week. For long term storage, aliquot and store at -20C to -80C. Avoid repeated freezing and thawing cycles.

## BACKGROUND

### Description

Keratin, type II cytoskeletal 8 also known as cytokeratin-8 (CK-8) or keratin-8 (K8) is a keratin protein that in human is encoded by the KRT8 gene. This gene is a member of the type II keratin family clustered on the long arm of chromosome 12. Type I and type II keratins heteropolymerize to form intermediate-sized filaments in the cytoplasm of epithelial cells. The product of this gene typically dimerizes with keratin 18 to form an intermediate filament in simple single-layered epithelial cells. This protein plays a role in maintaining cellular structural integrity and also functions in signal transduction and cellular differentiation. Mutations in this gene cause cryptogenic cirrhosis. Alternatively spliced transcript variants have been found for this gene.

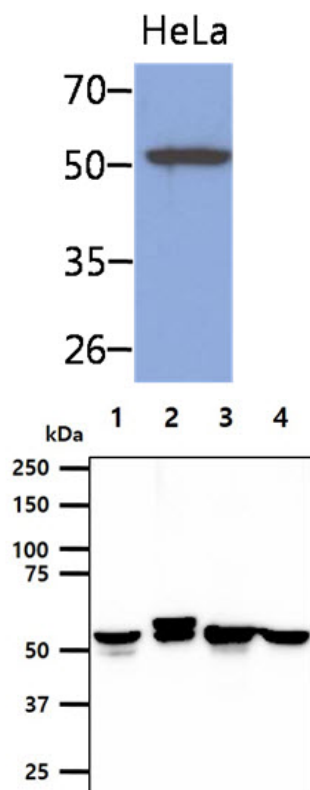
### General References

Moriya, T., et al. (2006) *Med Mol Morphol* 39(1): 8-13

Leitner, A., et al. (2012) *Biophys J* 103(2): 195-201

## DATA

### Western blot analysis (WB)



The cell lysate of HeLa (40ug) was resolved by SDS-PAGE, transferred to PVDF membrane and probed with anti-human KRT8 antibody (1:1000). Proteins were visualized using a goat anti-mouse secondary antibody conjugated to HRP and an ECL detection system.

The cell lysates (40ug) were resolved by SDS-PAGE, transferred to PVDF membrane and probed with anti-human KRT8 antibody (1:1000). Proteins were visualized using a goat anti-mouse secondary antibody conjugated to HRP and an ECL detection system.

Lane 1.: LnCap cell lysate

Lane 2.: PC3 cell lysate

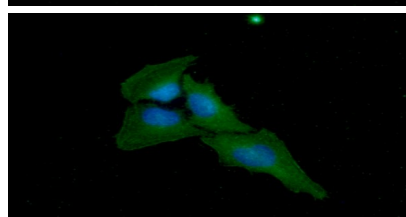
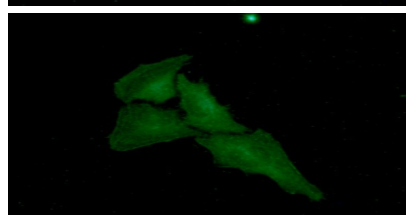
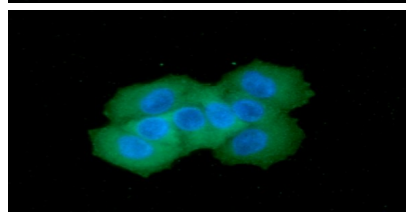
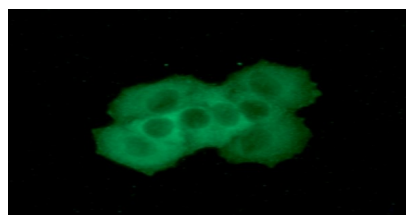
Lane 3.: MCF7 cell lysate

Lane 4.: A549 cell lysate

### Immunocytochemistry/Immunofluorescence (ICC/IF)

## Human Keratin 8/KRT8 antibody

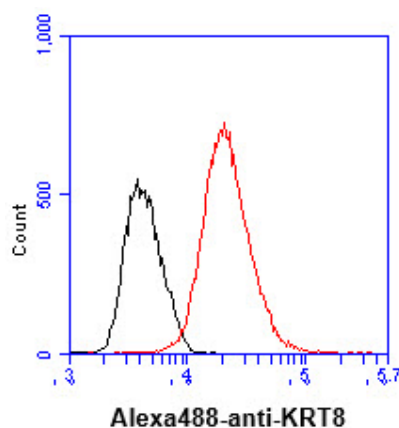
Catalog Number: ATGA0253



ICC/IF analysis of KRT8 in MCF7 cells line, stained with DAPI (Blue) for nucleus staining and monoclonal anti-human KRT8 antibody (1:100) with goat anti-mouse IgG-Alexa fluor 488 conjugate (Green).

ICC/IF analysis of KRT8 in HeLa cells line, stained with DAPI (Blue) for nucleus staining and monoclonal anti-human KRT8 antibody (1:100) with goat anti-mouse IgG-Alexa fluor 488 conjugate (Green).

### Flow cytometry (FACS)



Flow cytometry analysis of KRT8 in MCF7 cell line, staining at 2-5ug for  $1 \times 10^6$  cells (red line). The secondary antibody used goat anti-mouse IgG Alexa fluor 488 conjugate. Isotype control antibody was mouse IgG (black line).