

Human SNTA1 antibody

Catalog Number: ATGA0254

PRODUCT INFORMATION

Catalog number

ATGA0254

Clone No.

AT1E1

Product type

Monoclonal Antibody

UnitProt No.

Q13424

NCBI Accession No.

NP_003089

Alternative Names

Syntrophin alpha 1, Syntrophin, alpha 1, dj1187J4.5, LQT12, SNT1, TACIP1

PRODUCT SPECIFICATION

Antibody Host

Mouse

Reacts With

Human

Concentration

1mg/ml (determined by BCA assay)

Formulation

Liquid in. Phosphate-Buffered Saline (pH 7.4) with 0.02% Sodium Azide, 10% glycerol

Immunogen

Recombinant human SNTA1 (1-505aa) purified from E. coli

Isotype

IgG2b kappa

Purification Note

By protein-A affinity chromatography

Application

ELISA, WB, ICC/IF

Usage

The antibody has been tested by ELISA, Western blot and ICC/IF analysis to assure specificity and reactivity. Since application varies, however, each investigation should be titrated by the reagent to obtain optimal results.

Storage

Human SNTA1 antibody

Catalog Number: ATGA0254

Can be stored at +2C to +8C for 1 week. For long term storage, aliquot and store at -20C to -80C. Avoid repeated freezing and thawing cycles.

BACKGROUND

Description

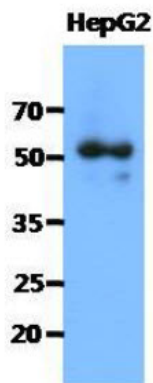
SNTA1 (Syntrophin alpha 1) is 505 amino acid protein. SNTA1 is adapter protein that binds to and probably organizes the subcellular localization of a variety of membrane proteins. It may link various receptors to the actin cytoskeleton and the extracellular matrix via the dystrophin glycoprotein complex. SNTA1 plays an important role in synapse formation and in the organization of UTRN and acetylcholine receptors at the neuromuscular synapse. Defects of SNTA1 are the cause of long QT syndrome type 12 (LQT12).

General References

- Wu, G., et al. (2008) Circ Arrhythm Electrophysiol 1: 193-201.
- Ahn, A.H., et al. (1996) J Biol Chem 271(5): 2724-30.
- Yang, B., et al (1995) J Biol Chem 270(10): 4975-8.

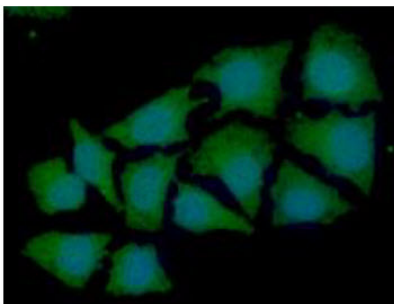
DATA

Western blot analysis (WB)



The cell lysate of HepG2 (40ug) was resolved by SDS-PAGE, transferred to PVDF membrane and probed with anti-human SNTA1 antibody (1:1000). Proteins were visualized using a goat anti-mouse secondary antibody conjugated to HRP and an ECL detection system.

Immunocytochemistry/Immunofluorescence (ICC/IF)



ICC/IF analysis of SNTA1 in HeLa cells. The cell was stained with ATGA0254 (1:100). The secondary antibody (green) was used Alexa Fluor 488. DAPI was stained the cell nucleus (blue).