

Human KLF7 antibody

Catalog Number: ATGA0256

PRODUCT INFORMATION

Catalog number

ATGA0256

Clone No.

AT3G3

Product type

Monoclonal Antibody

UnitProt No.

O75840

NCBI Accession No.

NP_003700

Alternative Names

Kruppel-like factor 7, uKLF

PRODUCT SPECIFICATION

Antibody Host

Mouse

Reacts With

Human

Concentration

1mg/ml (determined by BCA assay)

Formulation

Liquid in. Phosphate-Buffered Saline (pH 7.4) with 0.02% Sodium Azide, 10% glycerol

Immunogen

Recombinant human KLF7 (1-302aa) purified from E. coli

Isotype

IgG1 kappa

Purification Note

By protein-A affinity chromatography

Application

ELISA, WB

Usage

The antibody has been tested by ELISA and Western blot analysis to assure specificity and reactivity. Since application varies, however, each investigation should be titrated by the reagent to obtain optimal results.

Storage

Human KLF7 antibody

Catalog Number: ATGA0256

Can be stored at +2C to +8C for 1 week. For long term storage, aliquot and store at -20C to -80C. Avoid repeated freezing and thawing cycles.

BACKGROUND

Description

KLK7 is a member of the Kruppel-like transcriptional regulator family. Members in this family regulate cell proliferation, differentiation, survival and the development of nervous systems. and contain three C2H2 zinc fingers at the C-terminus that mediate binding to GC-rich sites. KLF7 binds specifically to an Ikaros core binding element that is crucial for *in vivo* NTRK1/TrkA enhancer function. This protein may contribute to the progression of type 2 diabetes by inhibiting insulin expression and secretion in pancreatic beta-cells and by deregulating adipocytokine secretion in adipocytes. A pseudogene of this gene is located on the long arm of chromosome 3. Alternative splicing results in multiple transcript variants.

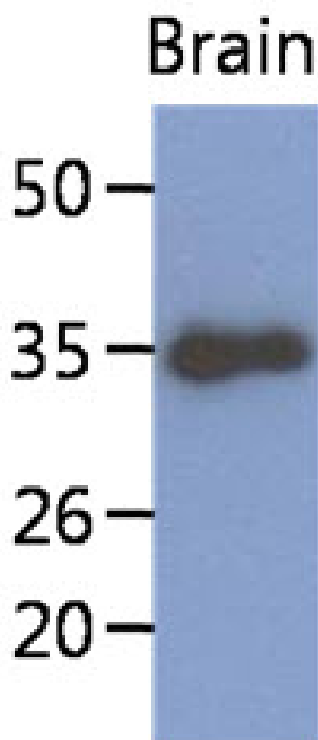
General References

Matsumoto, N., et al. (1998) *J Biol Chem* 273(43): 28229-37.

Kanazawa, A., et al. (2005) *Diabetologia* 48(7): 1315-22.

DATA

Western blot analysis (WB)



The tissue lysate of mouse brain (40ug) was resolved by SDS-PAGE, transferred to PVDF membrane and probed with anti-human KLF7 antibody (1:1000). Proteins were visualized using a goat anti-mouse secondary antibody conjugated to HRP and an ECL detection system.