

# Human MRPS25 antibody

Catalog Number: ATGA0258

## PRODUCT INFORMATION

---

**Catalog number**

ATGA0258

**Clone No.**

AT38E7

**Product type**

Monoclonal Antibody

**UnitProt No.**

P82663

**NCBI Accession No.**

NP\_071942

**Alternative Names**

28S ribosomal protein S25 mitochondrial, 28S ribosomal protein S25, mitochondrial, mitochondrial ribosomal protein S25, MRP-S25, RPMS25

## PRODUCT SPECIFICATION

---

**Antibody Host**

Mouse

**Reacts With**

Human

**Concentration**

1mg/ml (determined by BCA assay)

**Formulation**

Liquid in. Phosphate-Buffered Saline (pH 7.4) with 0.02% Sodium Azide, 10% glycerol

**Immunogen**

Recombinant human MRPS25 (1-173aa) purified from E. coli

**Isotype**

IgG2a kappa

**Purification Note**

By protein-A affinity chromatography

**Application**

ELISA, WB

**Usage**

The antibody has been tested by ELISA, Western blot analysis to assure specificity and reactivity. Since application varies, however, each investigation should be titrated by the reagent to obtain optimal results. Recommended dilution range for Western blot analysis is 1:500 ~ 1:5000. Recommended starting dilution is 1:1000.

# Human MRPS25 antibody

Catalog Number: ATGA0258

## Storage

Can be stored at +2C to +8C for 1 week. For long term storage, aliquot and store at -20C to -80C. Avoid repeated freezing and thawing cycles.

## BACKGROUND

### Description

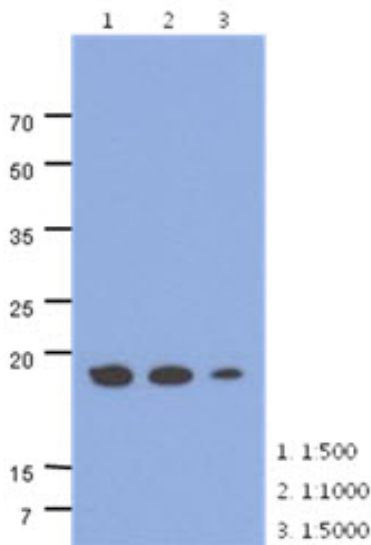
MRPS25 is a 28S subunit protein that belongs to the ribosomal protein S5P family. Mammalian mitochondrial ribosomal proteins are encoded by nuclear genes and help in protein synthesis within the mitochondrion. Mitochondrial ribosomes (mitoribosomes) consist of a small 28S subunit and a large 39S subunit. A pseudogene corresponding to this gene is found on chromosome 4

### General References

Koc EC, Burkhardt W, Blackburn K, et al. (2000). J. Biol. Chem. 275 (42): 32585-91.  
Zhang Z, Gerstein M (2003). Genomics 81 (5): 468-80.  
Cavdar Koc E, et al. (May 2001). J Biol Chem 276 (22): 19363-74.

## DATA

### Western blot analysis (WB)



The cell lysates of HepG2 (40ug) were resolved by SDS-PAGE, transferred to PVDF membrane and probed with anti-human MRPS25 antibody (1:500 ~ 1:1000). Proteins were visualized using a goat anti-mouse secondary antibody conjugated to HRP and an ECL detection system.