

Human SMAC/Diablo antibody

Catalog Number: ATGA0266

PRODUCT INFORMATION

Catalog number

ATGA0266

Clone No.

AT19F2

Product type

Monoclonal Antibody

UnitProt No.

Q9NR28

NCBI Accession No.

NP_063940

Alternative Names

Diablo isoform 1, SMAC3, DIABLO-S, FLJ10537, FLJ25049, Diablo isoform 1, SMAC/Diablo, Diablo isoform 1 0610041G12Rik, DBOH, Diablo homolog, DIABLO S, Diablo homolog (Drosophila), Mitochondrial Smac protein, Diablo homolog mitochondrial, SMAC 3, Smac protein, Direct IAP binding protein with low pI, Second mitochondria derived activator of caspase

PRODUCT SPECIFICATION

Antibody Host

Mouse

Reacts With

Human

Concentration

1mg/ml (determined by BCA assay)

Formulation

Liquid in. Phosphate-Buffered Saline (pH 7.4) with 0.02% Sodium Azide, 10% glycerol

Immunogen

Recombinant human SMAC/Diablo (56-239aa) purified from E. coli

Isotype

IgG2a kappa

Purification Note

By protein-A affinity chromatography

Application

ELISA, WB, ICC/IF, FACS

Usage

The antibody has been tested by ELISA, Western blot, ICC/IF and FACS analysis to assure specificity and reactivity. Since application varies, however, each investigation should be titrated by the reagent to obtain

Human SMAC/Diablo antibody

Catalog Number: ATGA0266

optimal results.

Storage

Can be stored at +2C to +8C for 1 week. For long term storage, aliquot and store at -20C to -80C. Avoid repeated freezing and thawing cycles.

BACKGROUND

Description

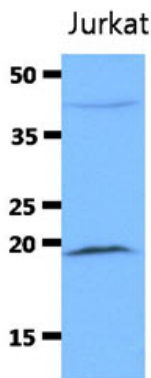
SMAC/Diablo is one of the proapoptotic proteins. SMAC promotes caspase activation in the cytochrome c/Apaf-1/caspase-9 pathway by binding to inhibitor of apoptosis proteins (IAPs) and removing their inhibitory activity. In healthy cells, SMAC is a mitochondrial protein, but when cells undergo apoptosis, SMAC is released into the cytosol. SMAC is ubiquitously expressed with highest expression in testis. Expression is also high in heart, liver, kidney, spleen, prostate and ovary. Low in brain, lung, thymus and peripheral blood leukocytes

General References

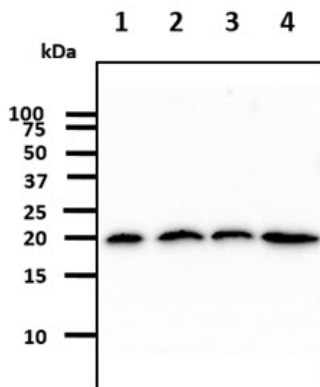
- McNeish. I.A., et al. (2003) *Exp Cell Res* 286(2): 186-198.
- Yu. J., et al. (2007) *Oncogene* 26(29): 4189-4198.
- Vucic. D., et al. (2002) *J Biol Chem* 277(14): 12275-12279.

DATA

Western blot analysis (WB)



The cell lysate of Jurkat (40ug) was resolved by SDS-PAGE, transferred to PVDF membrane and probed with anti-human SMAC antibody (1:3000). Proteins were visualized using a goat anti-mouse secondary antibody conjugated to HRP and an ECL detection system.



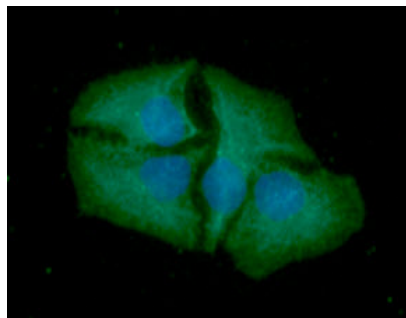
The cell lysates (40ug) were resolved by SDS-PAGE, transferred to PVDF membrane and probed with anti-human SMAC antibody (1:1000). Proteins were visualized using a goat anti-mouse secondary antibody conjugated to HRP and an ECL detection system.

- Lane 1.: 293T cell lysate
- Lane 2.: A431 cell lysate
- Lane 3.: Hep3B cell lysate
- Lane 4.: MCF7 cell lysate

Immunocytochemistry/Immunofluorescence (ICC/IF)

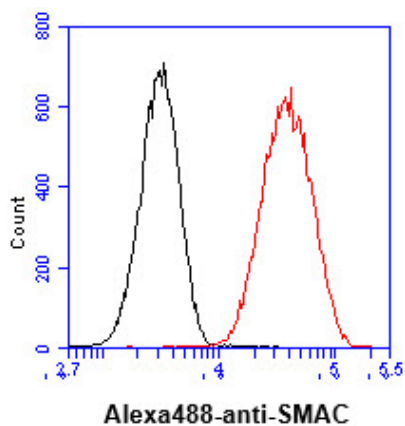
Human SMAC/Diablo antibody

Catalog Number: ATGA0266



ICC/IF analysis of SMAC in HeLa cells. The cell was stained with ATGA0266 (1:100). The secondary antibody (green) was used Alexa Fluor 488. DAPI was stained the cell nucleus (blue).

Flow cytometry (FACS)



Flow cytometry analysis of SMAC in HeLa cell line, staining at 2-5ug for 1×10^6 cells (red line). The secondary antibody used goat anti-mouse IgG Alexa fluor 488 conjugate. Isotype control antibody was mouse IgG (black line).