

# Human REXO2 antibody

Catalog Number: ATGA0269

## PRODUCT INFORMATION

---

**Catalog number**

ATGA0269

**Clone No.**

AT59D9

**Product type**

Monoclonal Antibody

**UnitProt No.**

Q9Y3B8

**NCBI Accession No.**

NP\_056338

**Alternative Names**

Oligoribonuclease mitochondrial, Oligoribonuclease, mitochondrial, REX2, RNA exonuclease 2 homolog (S. cerevisiae), CGI-114, REX2, RFN, SFN

## PRODUCT SPECIFICATION

---

**Antibody Host**

Mouse

**Reacts With**

Human

**Concentration**

1mg/ml (determined by BCA assay)

**Formulation**

Liquid in. Phosphate-Buffered Saline (pH 7.4) with 0.02% Sodium Azide, 10% glycerol

**Immunogen**

Recombinant human REXO 2 (26-237aa) purified from E. coli

**Isotype**

IgG2b kappa

**Purification Note**

By protein-A affinity chromatography

**Application**

ELISA, WB, ICC/IF

**Usage**

The antibody has been tested by ELISA, Western blot analysis to assure specificity and reactivity. Since application varies, however, each investigation should be titrated by the reagent to obtain optimal results. Recommended starting dilution is 1:500.

# Human REXO2 antibody

Catalog Number: ATGA0269

## Storage

Can be stored at +2C to +8C for 1 week. For long term storage, aliquot and store at -20C to -80C. Avoid repeated freezing and thawing cycles.

## BACKGROUND

### Description

REX2, RNA exonuclease 2 homolog (*S. cerevisiae*), also known as REXO2, is an enzyme which in humans is encoded by the REXO2 gene. Nucleases are components of DNA and RNA metabolism that carry out functions in DNA repair that also may be involved in resistance of human cells to UV-C-induced cell death through its role in the DNA repair process, replication, and recombination and in RNA processing and degradation. SFN is a homolog of Orn, a 3-prime-to-5-prime exoribonuclease of *E. coli* that attacks the free 3-prime hydroxyl group on single-stranded RNA, releasing 5-prime mono-nucleotides in a sequential manner.

### General References

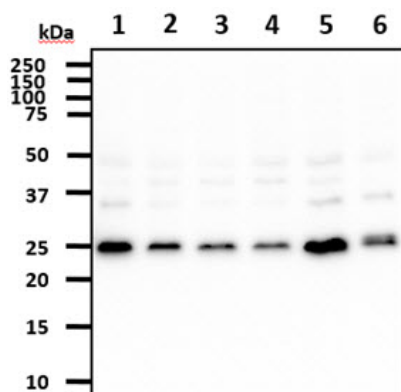
Entrez Gene: REXO2 REX2, RNA exonuclease 2 homolog (*S. cerevisiae*)

Lai, CH., et al. (2000) *Genome Res* 10(5): 703-13

Nguyen, LH., et al. (2000) *J.Biol.Chem* 275(34): 25900-6

## DATA

### Western blot analysis (WB)



The cell lysates (40ug) were resolved by SDS-PAGE, transferred to PVDF membrane and probed with anti-human REXO2 antibody (1:500). Proteins were visualized using a goat anti-mouse secondary antibody conjugated to HRP and an ECL detection system.

Lane 1. : SW480 cell lysate

Lane 2. : HeLa cell lysate

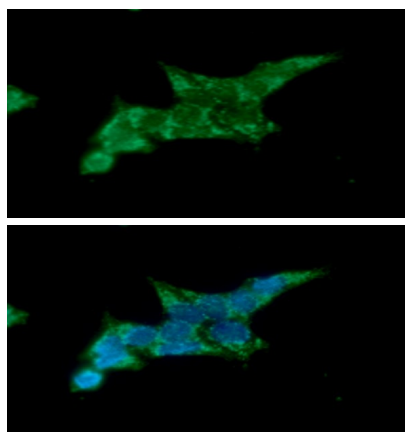
Lane 3. : 293T cell lysate

Lane 4. : Jurkat cell lysate

Lane 5. : K562 cell lysate

Lane 6. : NIH3T3 cell lysate

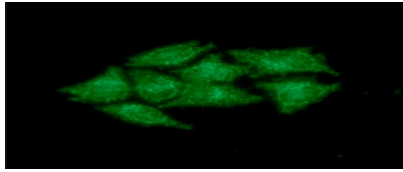
### Immunocytochemistry/Immunofluorescence (ICC/IF)



ICC/IF analysis of REXO2 in 293T cells line, stained with DAPI (Blue) for nucleus staining and monoclonal anti-human REXO2 antibody (1:100) with goat anti-mouse IgG-Alexa fluor 488 conjugate (Green).

## Human REXO2 antibody

Catalog Number: ATGA0269



ICC/IF analysis of REXO2 in HeLa cells line, stained with DAPI (Blue) for nucleus staining and monoclonal anti-human REXO2 antibody (1:100) with goat anti-mouse IgG-Alexa fluor 488 conjugate (Green).

