

# Human CRLF2 antibody

Catalog Number: ATGA0271

## PRODUCT INFORMATION

---

**Catalog number**

ATGA0271

**Clone No.**

AT4E7

**Product type**

Monoclonal Antibody

**UnitProt No.**

Q9HC73

**NCBI Accession No.**

NP\_071431

**Alternative Names**

Cytokine receptor-like factor 2 isoform 1 precursor, CRL2, CRLF2Y, TSLPR, Cytokine receptor-like factor 2 isoform 1, CRLF2, Cytokine receptor-like 2, ILXR, Thymic stromal lymphopoietin protein receptor, TSLP receptor

## PRODUCT SPECIFICATION

---

**Antibody Host**

Mouse

**Reacts With**

Human

**Concentration**

1mg/ml (determined by BCA assay)

**Formulation**

Liquid in. Phosphate-Buffered Saline (pH 7.4) with 0.02% Sodium Azide, 10% glycerol

**Immunogen**

Recombinant human CRLF2 (23-231aa) purified from E. coli

**Isotype**

IgG2a kappa

**Purification Note**

By protein-A affinity chromatography

**Application**

ELISA, WB, FACS

**Usage**

The antibody has been tested by ELISA, Western blot and FACS analysis to assure specificity and reactivity. Since application varies, however, each investigation should be titrated by the reagent to obtain optimal results.

# Human CRLF2 antibody

Catalog Number: ATGA0271

## Storage

Can be stored at +2C to +8C for 1 week. For long term storage, aliquot and store at -20C to -80C. Avoid repeated freezing and thawing cycles.

## BACKGROUND

### Description

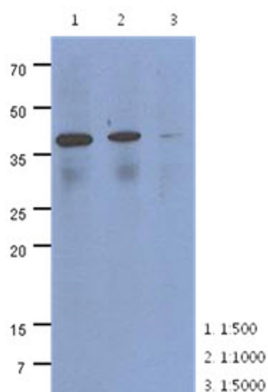
CRLF2 is cytokine receptor-like factor 2. Cytokine signals are mediated through specific receptor complexes, the components of which are mostly members of the type I cytokine receptor family. Type I cytokine receptors share conserved structural features in their extracellular domain. Receptor complexes are typically heterodimeric, consisting of alpha chains, which provide ligand specificity, and beta (or gamma) chains, which are required for the formation of high-affinity binding sites and signal transduction.

### General References

Blagoev B, Nielsen MM, Angrist M, et al. (2002). *Gene* 284 (1-2): 161-8.  
 Reche PA, Soumelis V, Gorman DM, et al. (2001). *J. Immunol.* 167 (1): 336-43.

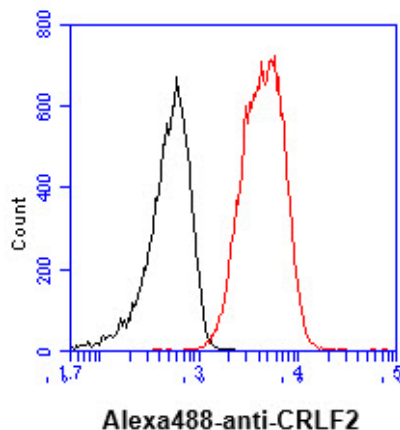
## DATA

### Western blot analysis (WB)



The cell lysates of HeLa (40ug) were resolved by SDS-PAGE, transferred to PVDF membrane and probed with anti-human CRLF2 antibody (1:500 ~ 1:5000). Proteins were visualized using a goat anti-mouse secondary antibody conjugated to HRP and an ECL detection system.

### Flow cytometry (FACS)



Flow cytometry analysis of CRLF2 in PBMC (Peripheral blood mononuclear cell), staining at 2-5ug for  $1 \times 10^6$  cells (red line). The secondary antibody used goat anti-mouse IgG Alexa fluor 488 conjugate. Isotype control antibody was mouse IgG (black line).