

# Human FKBP36/FKBP6 antibody

Catalog Number: ATGA0275

## PRODUCT INFORMATION

---

**Catalog number**

ATGA0275

**Clone No.**

AT9B7

**Product type**

Monoclonal Antibody

**UnitProt No.**

O75344

**NCBI Accession No.**

NP\_003593

**Alternative Names**

Inactive peptidyl-prolyl cis-trans isomerase FKBP6, Inactive PPIase FKBP6, 36 kDa FK506-binding protein, 36 kDa FKBP, FKBP-36, FK506-binding protein 6, FKBP-6, Immunophilin FKBP36, peptidylprolyl cis-trans isomerase, Rotamase

## PRODUCT SPECIFICATION

---

**Antibody Host**

Mouse

**Reacts With**

Human

**Concentration**

1mg/ml (determined by BCA assay)

**Formulation**

Liquid in. Phosphate-Buffered Saline (pH 7.4) with 0.02% Sodium Azide, 10% glycerol

**Immunogen**

Recombinant human FKBP6 (1-327aa) purified from E. coli

**Isotype**

IgG1 kappa

**Purification Note**

By protein-A affinity chromatography

**Application**

ELISA, WB

**Usage**

The antibody has been tested by ELISA and Western blot analysis to assure specificity and reactivity. Since application varies, however, each investigation should be titrated by the reagent to obtain optimal results.

# Human FKBP36/FKBP6 antibody

Catalog Number: ATGA0275

## Storage

Can be stored at +2C to +8C for 1 week. For long term storage, aliquot and store at -20C to -80C. Avoid repeated freezing and thawing cycles.

## BACKGROUND

### Description

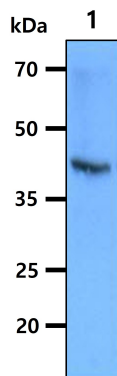
FKBP6 (FK506 binding protein 6) is a 327 amino acid protein. FKBP6 is a member of the immunophilin protein family, which play a role in immunoregulation and basic cellular processes involving protein folding and trafficking. FKBP6 is essential for homologous chromosome pairing in meiosis during spermatogenesis. FKBP6 is ubiquitously expressed in all tissues, with higher expressed in testis, heart, skeletal muscle, liver, and kidney. Deletion of FKBP6 may contribute to hypercalcemia and growth delay in Williams-Beuren syndrome.

### General References

- Meng. X., et al. (1998) Genomics 52: 130-137.
- Crackower. M.A., et al. (2003) Science 300: 1291-1295.
- Metcalf. K., et al. (2005) Clin Dymorphol 14: 61-65.

## DATA

### Western blot analysis (WB)



The cell lysates(40ug) was resolved by SDS-PAGE, transferred to PVDF membrane and probed with anti-human FKBP6 antibody (1:1000). Proteins were visualized using a goat anti-mouse secondary antibody conjugated to HRP and an ECL detection system.  
Lane 1.: MCF7 cell lysate