

# Human MYL4 antibody

Catalog Number: ATGA0276

## PRODUCT INFORMATION

---

**Catalog number**

ATGA0276

**Clone No.**

AT4E8

**Product type**

Monoclonal Antibody

**UnitProt No.**

P12829

**NCBI Accession No.**

NP\_001002841

**Alternative Names**

Myosin light chain 4, Myosin, light chain 4, ALC1, AMLC, GT1

## PRODUCT SPECIFICATION

---

**Antibody Host**

Mouse

**Reacts With**

Human

**Concentration**

1mg/ml (determined by BCA assay)

**Formulation**

Liquid in. Phosphate-Buffered Saline (pH 7.4) with 0.02% Sodium Azide, 10% glycerol

**Immunogen**

Recombinant human MYL4 (1-197aa) purified from E. coli

**Isotype**

IgG2a kappa

**Purification Note**

By protein-A affinity chromatography

**Application**

ELISA, WB

**Usage**

The antibody has been tested by ELISA and Western blot analysis to assure specificity and reactivity. Since application varies, however, each investigation should be titrated by the reagent to obtain optimal results.

**Storage**

# Human MYL4 antibody

Catalog Number: ATGA0276

Can be stored at +2C to +8C for 1 week. For long term storage, aliquot and store at -20C to -80C. Avoid repeated freezing and thawing cycles.

## BACKGROUND

### Description

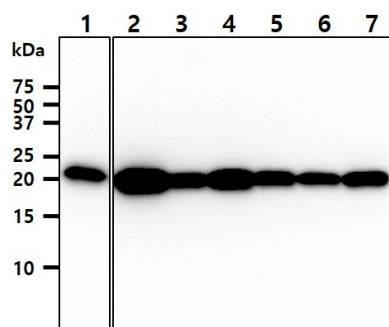
Myosin light chain 4 is a protein that in humans is encoded by the MYL4 gene. Myosin is a hexameric ATPase cellular motor protein. It is composed of two myosin heavy chains, two nonphosphorylatable myosin alkali light chains, and two phosphorylatable myosin regulatory light chains. This gene encodes a myosin alkali light chain that is found in embryonic muscle and adult atria. Two alternatively spliced transcript variants encoding the same protein have been found for this gene.

### General References

Kurabayashi, M., et al. (1998) J Biol Chem 263(27): 13930-6.  
Rotter, M., et al. (1991) Nucleic Acids Res 19(7): 1497-504.

## DATA

### Western blot analysis (WB)



The cell lysates (40ug) were resolved by SDS-PAGE, transferred to PVDF membrane and probed with anti-human MYL4 antibody (1:1000). Proteins were visualized using a goat anti-mouse secondary antibody conjugated to HRP and an ECL detection system.

Lane 1.: HeLa cell lysate  
Lane 2.: HepG2 cell lysate  
Lane 3.: K562 cell lysate  
Lane 4.: MCF7 cell lysate  
Lane 5.: Jurkat cell lysate  
Lane 6.: 293T cell lysate  
Lane 7.: LnCap cell lysate