

Human SSR2 antibody

Catalog Number: ATGA0277

PRODUCT INFORMATION

Catalog number

ATGA0277

Clone No.

AT31G6

Product type

Monoclonal Antibody

UnitProt No.

P43308

NCBI Accession No.

NP_003136

Alternative Names

Tanslocon-associated protein subunit beta precursor, Tanslocon-associated protein subunit beta precursor, HSD25, TLAP, TRAP-BETA, TRAPB

PRODUCT SPECIFICATION

Antibody Host

Mouse

Reacts With

Human

Concentration

1mg/ml (determined by BCA assay)

Formulation

Liquid in. Phosphate-Buffered Saline (pH 7.4) with 0.02% Sodium Azide, 10% glycerol

Immunogen

Recombinant human SSR2 (18-149aa) purified from E. coli

Isotype

IgG1 kappa

Purification Note

By protein-A affinity chromatography

Application

ELISA, WB, ICC/IF

Usage

The antibody has been tested by ELISA, Western blot and ICC/IF analysis to assure specificity and reactivity. Since application varies, however, each investigation should be titrated by the reagent to obtain optimal results.

Human SSR2 antibody

Catalog Number: ATGA0277

Storage

Can be stored at +2C to +8C for 1 week. For long term storage, aliquot and store at -20C to -80C. Avoid repeated freezing and thawing cycles.

BACKGROUND

Description

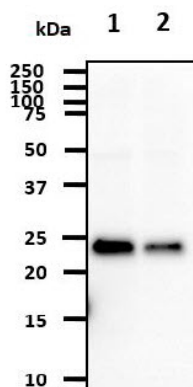
SSR2 belongs to the TRAP-beta family. SSR is a glycosylated endoplasmic reticulum (ER) membrane receptor associated with protein translocation across the ER membrane. TRAP proteins are part of a complex whose function is to bind calcium to the ER membrane and thereby regulate the retention of ER resident proteins. The SSR consists of 2 subunits, a 34kD glycoprotein (alpha-SSR or SSR1) and a 22kD glycoprotein (beta-SSR or SSR2).

General References

Chinen, K., et al. (1995) Cytogenet Cell Genet 70(3-4): 215-7.
Sikorska, M., et al. (2008) J Neurosci Res 86(8): 1680-93.

DATA

Western blot analysis (WB)



The cell lysates (40ug) were resolved by SDS-PAGE, transferred to PVDF membrane and probed with anti-human SSR2 antibody (1:1000). Proteins were visualized using a goat anti-mouse secondary antibody conjugated to HRP and an ECL detection system.
Lane 1.: HeLa cell lysate
Lane 2.: Jurkat cell lysate

Immunocytochemistry/Immunofluorescence (ICC/IF)



ICC/IF analysis of SSR2 in HeLa cells. The cell was stained with ATGA0277 (1:100). The secondary antibody (green) was used Alexa Fluor 488. DAPI was stained the cell nucleus (blue).