

Human PPM1F antibody

Catalog Number: ATGA0278

PRODUCT INFORMATION

Catalog number

ATGA0278

Clone No.

AT6D11

Product type

Monoclonal Antibody

UnitProt No.

P49593

NCBI Accession No.

NP_055449

Alternative Names

Protein phosphatase 1F, CAMKP, CaMKPase, FEM-2, hFEM-2, POPX2

PRODUCT SPECIFICATION

Antibody Host

Mouse

Reacts With

Human

Concentration

1mg/ml (determined by BCA assay)

Formulation

Liquid in. Phosphate-Buffered Saline (pH 7.4) with 0.02% Sodium Azide, 10% glycerol

Immunogen

Recombinant human PPM1F (1-454aa) purified from E. coli

Isotype

IgG1 kappa

Purification Note

By protein-A affinity chromatography

Application

ELISA, WB, ICC/IF

Usage

The antibody has been tested by ELISA, Western blot and ICC/IF analysis to assure specificity and reactivity. Since application varies, however, each investigation should be titrated by the reagent to obtain optimal results.

Storage

Human PPM1F antibody

Catalog Number: ATGA0278

Can be stored at +2C to +8C for 1 week. For long term storage, aliquot and store at -20C to -80C. Avoid repeated freezing and thawing cycles.

BACKGROUND

Description

PPM1F is a member of the PP2C family of Ser/Thr protein phosphatases. PP2C family members are known to be negative regulators of cell stress response pathways. This phosphatase can interact with Rho guanine nucleotide exchange factors (PIX), and thus block the effects of p21-activated kinase 1 (PAK), a protein kinase mediating biological effects downstream of Rho GTPases. Calcium/calmodulin-dependent protein kinase II gamma (CAMK2G/CAMK-II) is found to be one of the substrates of this phosphatase. The overexpression of this phosphatase or CAMK2G has been shown to mediate caspase-dependent apoptosis. An alternatively spliced transcript variant has been identified, but its full-length nature has not been determined.

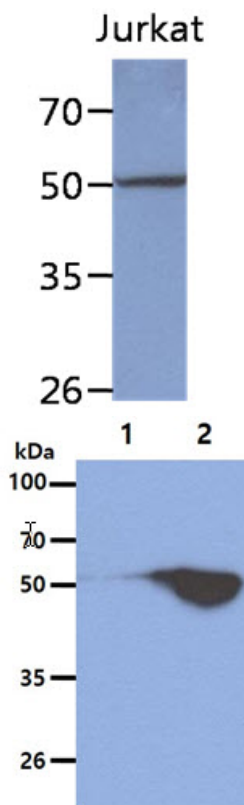
General References

Koh, CG., et al. (2002) *Curr Biol* 12(4): 317-21.

Tan, KM., et al. (2001) *J Biol Chem* 276(47): 44193-202.

DATA

Western blot analysis (WB)



The cell lysate of Jurkat (40ug) was resolved by SDS-PAGE, transferred to PVDF membrane and probed with anti-human PPM1F antibody (1:1000). Proteins were visualized using a goat anti-mouse secondary antibody conjugated to HRP and an ECL detection system.

The cell lysates (2ug) were resolved by SDS-PAGE, transferred to PVDF membrane and probed with anti-human PPM1F antibody (1:1000). Proteins were visualized using a goat anti-mouse secondary antibody conjugated to HRP and an ECL detection system.

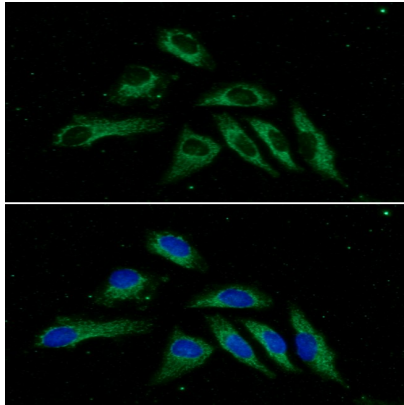
Lane 1.: 293T cell lysate

Lane 2.: PPM1F Transfected 293T cell lysate

Immunocytochemistry/Immunofluorescence (ICC/IF)

Human PPM1F antibody

Catalog Number: ATGA0278



ICC/IF analysis of PPM1F in HeLa cells. The cell was stained with ATGA0278 (1:100). The secondary antibody (green) was used Alexa Fluor 488. DAPI was stained the cell nucleus (blue).