

# Human BMP-2 antibody

Catalog Number: ATGA0281

## PRODUCT INFORMATION

---

**Catalog number**

ATGA0281

**Clone No.**

AT15B3

**Product type**

Monoclonal Antibody

**UnitProt No.**

P12643

**NCBI Accession No.**

NP\_001191

**Alternative Names**

Bone morphogenetic protein 2, BMP-2A

## PRODUCT SPECIFICATION

---

**Antibody Host**

Mouse

**Reacts With**

Human

**Concentration**

1mg/ml (determined by BCA assay)

**Formulation**

Liquid in. Phosphate-Buffered Saline (pH 7.4) with 0.02% Sodium Azide, 10% glycerol

**Immunogen**

Recombinant human BMP2 (283-396aa) purified from E. coli

**Isotype**

IgG2b kappa

**Purification Note**

By protein-A affinity chromatography

**Application**

ELISA, WB, ICC/IF

**Usage**

The antibody has been tested by ELISA, Western blot and ICC/IF analysis to assure specificity and reactivity. Since application varies, however, each investigation should be titrated by the reagent to obtain optimal results.

**Storage**

# Human BMP-2 antibody

Catalog Number: ATGA0281

Can be stored at +2C to +8C for 1 week. For long term storage, aliquot and store at -20C to -80C. Avoid repeated freezing and thawing cycles.

## BACKGROUND

### Description

BMP-2 (Bone morphogenetic protein 2) is multi-functional growth factors that belong to the transforming growth factor beta (TGF beta) superfamily. It plays an important role in embryonic dorsal-ventral patterning, organogenesis, limb bud formation, and bone formation and regeneration. BMP-2 also promotes the maintenance and repair of colonic epithelium, suppresses neuronal dopamine synthesis and release, induces apoptosis in medulloblastoma cells, and is required for cardiac contractility.

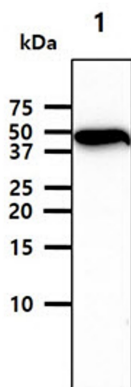
### General References

Chen D., et al. (2004). Growth factors. 22(4):233-41.

Schliephake H., et al. (2005). Clin Oral Implants Res. 17(6):666-72.

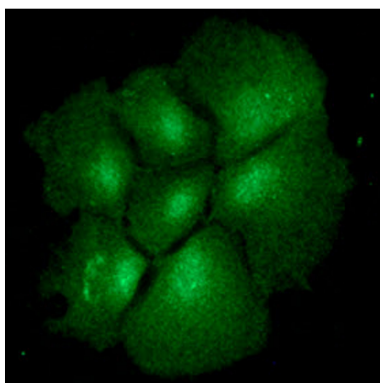
## DATA

### Western blot analysis (WB)



The cell lysate (40ug) was resolved by SDS-PAGE, transferred to PVDF membrane and probed with anti-human BMP2 antibody (1:1000). Proteins were visualized using a goat anti-mouse secondary antibody conjugated to HRP and an ECL detection system.  
Lane 1.: HepG2 cell lysate

### Immunocytochemistry/Immunofluorescence (ICC/IF)



ICC/IF analysis of BMP2 in Hep3B cells. The cell was stained with ATGA0281 (1:100). The secondary antibody (green) was used Alexa Fluor 488.