

Human Omentin/ITLN1 antibody

Catalog Number: ATGA0282

PRODUCT INFORMATION

Catalog number

ATGA0282

Clone No.

AT6C11

Product type

Monoclonal Antibody

UnitProt No.

Q8WWA0

NCBI Accession No.

NP_060095

Alternative Names

Intelectin-1, Endothelial lectin HL-1, Galactofuranose-binding lectin, Intestinal lactoferrin receptor, Omentin, INTL, ITLN, LFR

PRODUCT SPECIFICATION

Antibody Host

Mouse

Reacts With

Human

Concentration

1mg/ml (determined by BCA assay)

Formulation

Liquid in. Phosphate-Buffered Saline (pH 7.4) with 0.02% Sodium Azide, 10% glycerol

Immunogen

Recombinant human ITLN1 (17-313aa) purified from E. coli

Isotype

IgG1 kappa

Purification Note

By protein-A affinity chromatography

Application

ELISA, WB

Usage

The antibody has been tested by ELISA and Western blot analysis to assure specificity and reactivity. Since application varies, however, each investigation should be titrated by the reagent to obtain optimal results.

Human Omentin/ITLN1 antibody

Catalog Number: ATGA0282

Storage

Can be stored at +2C to +8C for 1 week. For long term storage, aliquot and store at -20C to -80C. Avoid repeated freezing and thawing cycles.

BACKGROUND

Description

ITLN1, also known as intelectin1 or omentin, has no effect on basal glucose uptake but enhances insulin-stimulated glucose uptake in adipocytes. ITLN1 may play a role in the defense system against microorganisms and specifically recognize carbohydrate chains of pathogens and bacterial components containing galactofuranosyl residues, in a calcium-dependent manner.

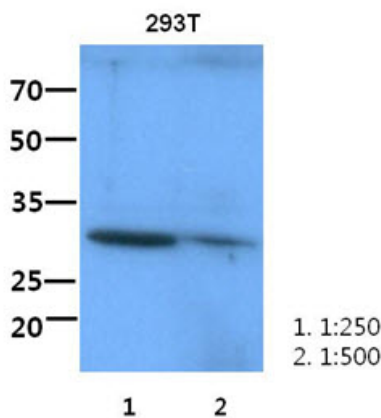
General References

Tsuji S., et al. (2001) J. Biol. Chem. 276:23456-23463.

Tsuji S., et al. (2007) Glycobiology (10):1045-51.

DATA

Western blot analysis (WB)



The cell lysate of 293T (60ug) were resolved by SDS-PAGE, transferred to PVDF membrane and probed with anti-human ITLN1 antibody(1:250-1:500). Proteins were visualized using a goat anti-mouse secondary antibody conjugated to HRP and an ECL detection system.