

# Human PCBP1 antibody

Catalog Number: ATGA0284

## PRODUCT INFORMATION

---

**Catalog number**

ATGA0284

**Clone No.**

AT2A10

**Product type**

Monoclonal Antibody

**UnitProt No.**

Q15365

**NCBI Accession No.**

NP\_006187

**Alternative Names**

Poly(rC) binding protein 1, Poly(rC) binding protein 1, hnRNP-E1, hnRNP-X, HNRPE1, HNRPX

## PRODUCT SPECIFICATION

---

**Antibody Host**

Mouse

**Reacts With**

Human

**Concentration**

1mg/ml (determined by BCA assay)

**Formulation**

Liquid in. Phosphate-Buffered Saline (pH 7.4) with 0.02% Sodium Azide, 10% glycerol

**Immunogen**

Recombinant human PCBP1 (1-163aa) purified from E. coli

**Isotype**

IgG2a kappa

**Purification Note**

By protein-A affinity chromatography

**Application**

ELISA, WB, ICC/IF

**Usage**

The antibody has been tested by ELISA, Western blot and ICC/IF analysis to assure specificity and reactivity. Since application varies, however, each investigation should be titrated by the reagent to obtain optimal results.

**Storage**

# Human PCBP1 antibody

Catalog Number: ATGA0284

Can be stored at +2C to +8C for 1 week. For long term storage, aliquot and store at -20C to -80C. Avoid repeated freezing and thawing cycles.

## BACKGROUND

### Description

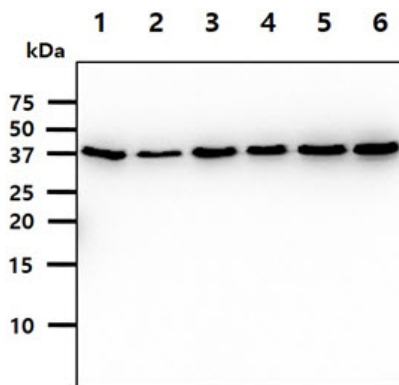
PCBP-1 and PCBP-2 have paralogues (PCBP3 and PCBP4) which are thought to have arisen as a result of duplication events of entire genes. PCBP1 constitutes a set of polypeptides that contribute to mRNA transcription, pre-mRNA processing as well as mature mRNA transport to the cytoplasm and translation. It has also been implicated in translational control of the 15-lipoxygenase mRNA, human Papillomavirus type 16 L2 mRNA, and hepatitis A virus RNA.

### General References

Beausoleil S.A., et al. (2006) Nat. Biotechnol. 24(10):1285-1292.  
Leffers H., et al. (1995) Eur J Biochem 230(2):447-53.

## DATA

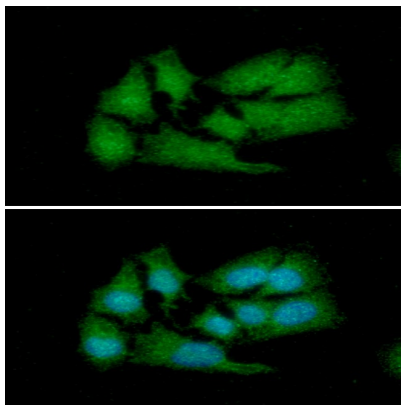
### Western blot analysis (WB)



The cell lysates (40ug) were resolved by SDS-PAGE, transferred to PVDF membrane and probed with anti-human PCBP1 antibody (1:500). Proteins were visualized using a goat anti-mouse secondary antibody conjugated to HRP and an ECL detection system.

Lane 1.: HeLa cell lysate  
Lane 2.: HepG2 cell lysate  
Lane 3.: K562 cell lysate  
Lane 4.: 293T cell lysate  
Lane 5.: Jurkat cell lysate  
Lane 6.: MCF7 cell lysate

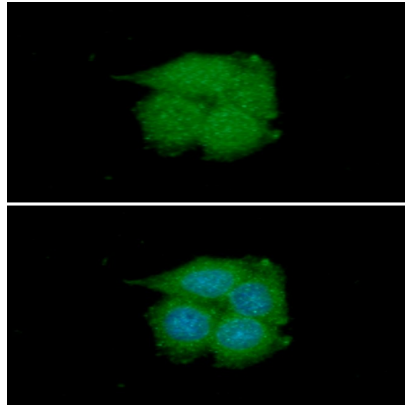
### Immunocytochemistry/Immunofluorescence (ICC/IF)



ICC/IF analysis of PCBP1 in HeLa cells. The cell was stained with ATGA0284 (1:100). The secondary antibody (green) was used Alexa Fluor 488. DAPI was stained the cell nucleus (blue).

## Human PCBP1 antibody

Catalog Number: ATGA0284



ICC/IF analysis of PCBP1 in MCF-7 cells. The cell was stained with ATGA0284 (1:100). The secondary antibody (green) was used Alexa Fluor 488. DAPI was stained the cell nucleus (blue).