

Human STOM antibody

Catalog Number: ATGA0291

PRODUCT INFORMATION

Catalog number

ATGA0291

Clone No.

AT33F5

Product type

Monoclonal Antibody

UnitProt No.

P27105

NCBI Accession No.

NP_004090

Alternative Names

Erythrocyte band 7 integral membrane protein isoform a, BND7, EPB7, EPB72

PRODUCT SPECIFICATION

Antibody Host

Mouse

Reacts With

Human

Concentration

1mg/ml (determined by BCA assay)

Formulation

Liquid in. Phosphate-Buffered Saline (pH 7.4) with 0.02% Sodium Azide, 10% glycerol

Immunogen

Recombinant human STOM (55-288aa) purified from E. coli

Isotype

IgG2b kappa

Purification Note

By protein-A affinity chromatography

Application

ELISA, WB, ICC/IF

Usage

The antibody has been tested by ELISA, Western blot and ICC/IF analysis to assure specificity and reactivity. Since application varies, however, each investigation should be titrated by the reagent to obtain optimal results.

Storage

Human STOM antibody

Catalog Number: ATGA0291

Can be stored at +2C to +8C for 1 week. For long term storage, aliquot and store at -20C to -80C. Avoid repeated freezing and thawing cycles.

BACKGROUND

Description

STOM (stomatin) is a member of a highly conserved family of integral membrane proteins. This protein localizes to the cell membrane of red blood cells and other cell types, where it may regulate ion channels and transporters. Loss of localization of STOM is associated with hereditary stomatocytosis, a form of hemolytic anemia. Although the wide distribution of stomatin and its constitutive expression suggest an important role for this protein in cell biology, perhaps as a house-keeping component, its function remains undetermined. The massive presence of stomatin in membrane-protruding folds and extensions suggests a possible structural role for this protein in the formation of these structures and/or the anchorage to the actin cytoskeleton.

General References

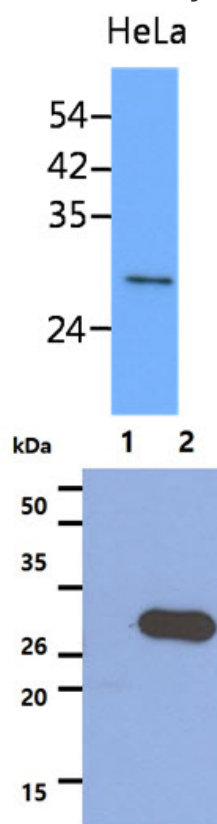
Hiebl-Dirschmied CM., et al. (1991) *Biochim Biophys Acta* 1090 (1): 123-4.

Stewart GW (1997) *J. Biol. Chem.* 29 (2): 271-4.

Entrez Gene: STOM stomatin.

DATA

Western blot analysis (WB)



The cell lysate of HeLa (40ug) was resolved by SDS-PAGE, transferred to PVDF membrane and probed with anti-human STOM antibody (1:1000). Proteins were visualized using a goat anti-mouse secondary antibody conjugated to HRP and an ECL detection system.

The cell lysates (20ug) were resolved by SDS-PAGE, transferred to PVDF membrane and probed with anti-human STOM antibody (1:1000). Proteins were visualized using a goat anti-mouse secondary antibody conjugated to HRP and an ECL detection system.

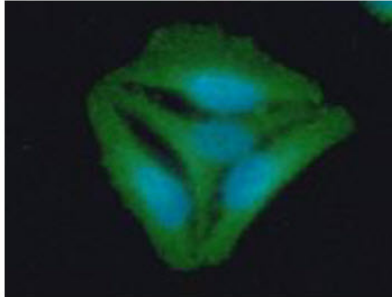
Lane 1.: 293T cell lysate

Lane 2.: STOM Transfected 293T cell lysate

Immunocytochemistry/Immunofluorescence (ICC/IF)

Human STOM antibody

Catalog Number: ATGA0291



ICC/IF analysis of STOM in HeLa cells. The cell was stained with ATGA0291 (1:100). The secondary antibody (green) was used Alexa Fluor 488. DAPI was stained the cell nucleus (blue).