

Human delta-Sarcoglycan/SGCD antibody

Catalog Number: ATGA0294

PRODUCT INFORMATION

Catalog number

ATGA0294

Clone No.

AT19G8

Product type

Monoclonal Antibody

UnitProt No.

Q92629

NCBI Accession No.

NP_001121681

Alternative Names

Delta-sarcoglycan, 35DAG, CMD1L, DAGD, SG-delta, SGCDP, SGD, LGMD2F, Delta-SG

PRODUCT SPECIFICATION

Antibody Host

Mouse

Reacts With

Human

Concentration

1mg/ml (determined by BCA assay)

Formulation

Liquid in. Phosphate-Buffered Saline (pH 7.4) with 0.02% Sodium Azide, 10% glycerol

Immunogen

Recombinant human SGCD (57-289aa) purified from E. coli

Isotype

IgG1b kappa

Purification Note

By protein-A affinity chromatography

Application

ELISA, WB

Usage

The antibody has been tested by ELISA and Western blot analysis to assure specificity and reactivity. Since application varies, however, each investigation should be titrated by the reagent to obtain optimal results.

Storage

Human delta-Sarcoglycan/SGCD antibody

Catalog Number: ATGA0294

Can be stored at +2C to +8C for 1 week. For long term storage, aliquot and store at -20C to -80C. Avoid repeated freezing and thawing cycles.

BACKGROUND

Description

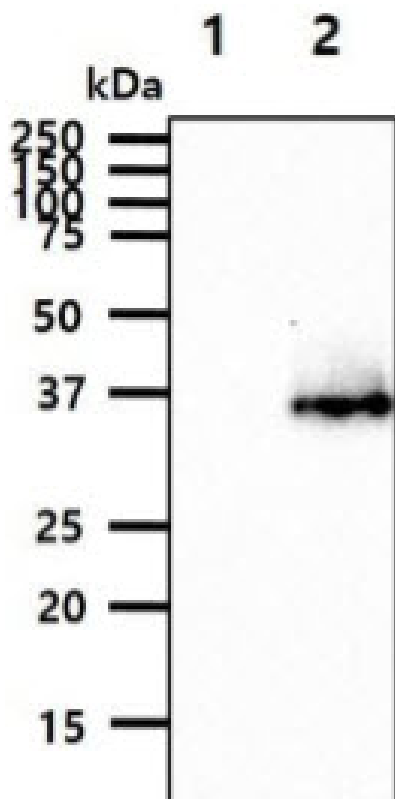
SGCD is one of the four known components of the sarcoglycan complex, which is a subcomplex of the dystrophin-glycoprotein complex (DGC). DGC forms a link between the F-actin cytoskeleton and the extracellular matrix. It is expressed most abundantly in skeletal and cardiac muscle. Mutations in this gene have been associated with autosomal recessive limb-girdle muscular dystrophy and dilated cardiomyopathy. Alternatively spliced transcript variants encoding distinct isoforms have been observed for this gene.

General References

Thompson T.G., et al. (2000) J. Biol. Chem. 148: 115-126.
Entrez Gene: SGCD sarcoglycan, delta.

DATA

Western blot analysis (WB)



The cell lysates (40ug) were resolved by SDS-PAGE, transferred to PVDF membrane and probed with anti-human SGCD antibody (1:1000). Proteins were visualized using a goat anti-mouse secondary antibody conjugated to HRP and an ECL detection system.
Lane 1.: 293T cell lysate
Lane 2.: SGCD transfected 293T cell lysate