

Human Cathepsin Z antibody

Catalog Number: ATGA0304

PRODUCT INFORMATION

Catalog number

ATGA0304

Clone No.

AT6G11

Product type

Monoclonal Antibody

UnitProt No.

Q9UBR2

NCBI Accession No.

NP_001327

Alternative Names

Carboxypeptidase LB, Cathepsin B2, Cathepsin IV, Cathepsin P, Cathepsin X, Cathepsin Y, Cathepsin Z, Cathepsin Z preproprotein, Cathepsin Z1, CatX, CTSP, CTSX, CTSZ, Cysteine-type carboxypeptidase, Lysosomal carboxypeptidase B

PRODUCT SPECIFICATION

Antibody Host

Mouse

Reacts With

Human

Concentration

1mg/ml (determined by BCA assay)

Formulation

Liquid in. Phosphate-Buffered Saline (pH 7.4) with 0.02% Sodium Azide, 10% glycerol

Immunogen

Recombinant human CTSZ (62-303aa) purified from E. coli

Isotype

IgG2b kappa

Purification Note

By protein-A affinity chromatography

Application

ELISA, WB, ICC/IF

Usage

The antibody has been tested by ELISA, Western blot analysis to assure specificity and reactivity. Since application varies, however, each investigation should be titrated by the reagent to obtain optimal results. Recommended starting dilution is 1:1000.

Human Cathepsin Z antibody

Catalog Number: ATGA0304

Storage

Can be stored at +2C to +8C for 1 week. For long term storage, aliquot and store at -20C to -80C. Avoid repeated freezing and thawing cycles.

BACKGROUND

Description

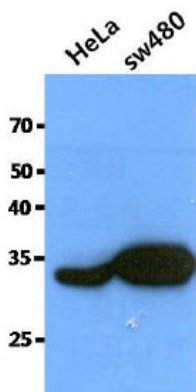
CTSZ (Cathepsin Z), also known as Cathepsin X and Cathepsin P, is 303 amino acid protein. It is lysosomal cysteine proteinase and member of the peptidase C1 family. It exhibits carboxy-monopeptidase as well as carboxy-dipeptidase activity. This gene is widely expressed in cancer cell lines, primary tumors. CTSZ may be involved in tumor progression. And, CTSZ plays a role in normal intracellular protein degradation

General References

- Pungercar. J., et al. (2000) Pflugers Arch 439: R119-R121
- Pungercar. J. and Ivanovski. G. (2000) Pflugers Arch 439: R116-R118
- Naegler. D.K., et al. (1999) Biochemistry 38: 12648-12654

DATA

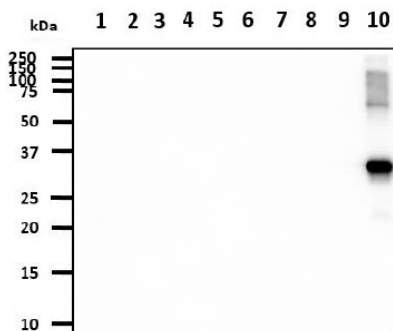
Western blot analysis (WB)



The cell lysates of HeLa (40ug) and SW480 (40ug) were resolved by SDS-PAGE, transferred to PVDF membrane and probed with anti-human CTSZ antibody (1:1000). Proteins were visualized using a goat anti-mouse secondary antibody conjugated to HRP and an ECL detection system.

The recombinant proteins (20ng) were resolved by SDS-PAGE, transferred to PVDF membrane and probed with anti-human CTSZ antibody (1:1000). Proteins were visualized using a goat anti-mouse secondary antibody conjugated to HRP and an ECL detection system.

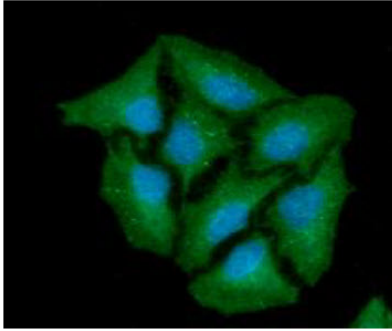
- Lane 1. : Recombinant Human CTSB
- Lane 2. : Recombinant Human CTSD
- Lane 3. : Recombinant Human CTSE
- Lane 4. : Recombinant Human CTSF
- Lane 5. : Recombinant Human CTSH
- Lane 6. : Recombinant Human CTSK
- Lane 7. : Recombinant Human CTSL
- Lane 8. : Recombinant Human CTSS
- Lane 9. : Recombinant Human CTSW
- Lane 10. : Recombinant Human CTSZ



Immunocytochemistry/Immunofluorescence (ICC/IF)

Human Cathepsin Z antibody

Catalog Number: ATGA0304



ICC/IF analysis of CTSZ in HeLa cells line, stained with DAPI (Blue) for nucleus staining and monoclonal anti-human CTSZ antibody (1:100) with goat anti-mouse IgG-Alexa fluor 488 conjugate (Green).