

Human IGF-1 antibody

Catalog Number: ATGA0311

PRODUCT INFORMATION

Catalog number

ATGA0311

Clone No.

AT6F8

Product type

Monoclonal Antibody

UnitProt No.

P05019

NCBI Accession No.

NP_000609

Alternative Names

IBP1, IGF-1, IGFI, IGF-IA, IGF-IB, Insulin like growth factor 1 (somatomedin C), Insulin like growth factor IA, Insulin like growth factor IB, Insulin-like growth factor-1 IGF IA, Mechano growth factor, MGF, Somatomedin C

PRODUCT SPECIFICATION

Antibody Host

Mouse

Reacts With

Human

Concentration

1mg/ml (determined by BCA assay)

Formulation

Liquid in. Phosphate-Buffered Saline (pH 7.4) with 0.02% Sodium Azide, 10% glycerol

Immunogen

Recombinant human IGF1 (49-118aa) purified from E. coli

Isotype

IgG2b kappa

Purification Note

By protein-A affinity chromatography

Application

ELISA, WB, ICC/IF

Usage

The antibody has been tested by ELISA, Western blot analysis to assure specificity and reactivity. Since application varies, however, each investigation should be titrated by the reagent to obtain optimal results. Recommended starting dilution is 1:1000.

Human IGF-1 antibody

Catalog Number: ATGA0311

Storage

Can be stored at +2C to +8C for 1 week. For long term storage, aliquot and store at -20C to -80C. Avoid repeated freezing and thawing cycles.

BACKGROUND

Description

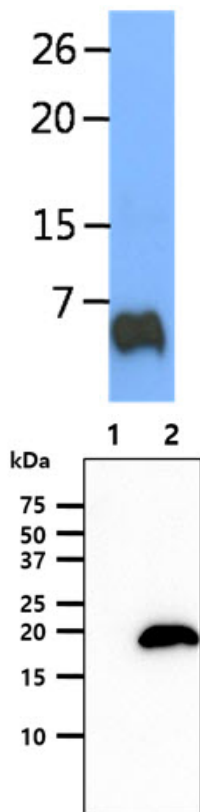
Insulin-like growth factor 1 (IGF-1), also called somatomedin C, is a protein that in humans is encoded by the IGF1 gene. IGF-1 has also been referred to as a Sulfation factor and its effects were termed nonsuppressible insulin-like activity (NSILA) in the 1970s. IGF-1 is a hormone similar in molecular structure to insulin. It plays an important role in childhood growth and continues to have anabolic effects in adults. A synthetic analog of IGF-1, mecasermin, is used for the treatment of growth failure. IGF-1 consists of 70 amino acids in a single chain with three intramolecular disulfide bridges. IGF-1 has a molecular weight of 7,649 daltons.

General References

- Hoppener J.W., et al. (1985) Hum Genet 69(2): 157-160
- Jansen M., et al. (1983) Nature 306(5943): 609-611
- Salmon W., et al. (1957) J Lab Clin Med 49(6): 825-836
- Keating G.M., (2008) BioDrugs 22(3): 177-188
- Rinderknecht E., et al. (1978) J Biol Chem 253(8): 2769-2776

DATA

Western blot analysis (WB)



The human IGF1 recombinant protein (12.5ng) was resolved by SDS-PAGE, transferred to PVDF membrane and probed with anti-human IGF1 antibody (1:1000). Proteins were visualized using a goat anti-mouse secondary antibody conjugated to HRP and an ECL detection system.

The cell lysates (40ug) were resolved by SDS-PAGE, transferred to PVDF membrane and probed with anti-human IGF1 antibody (1:1000). Proteins were visualized using a goat anti-mouse secondary antibody conjugated to HRP and an ECL detection system.

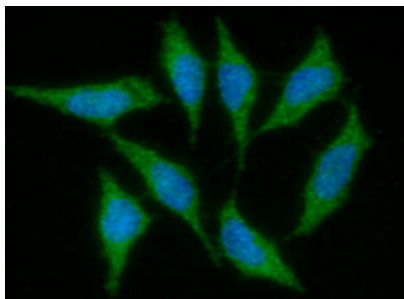
Lane 1.: 293T cell lysate

Lane 2.: IGF1 transfected 293T cell lysate

Human IGF-1 antibody

Catalog Number: ATGA0311

Immunocytochemistry/Immunofluorescence (ICC/IF)



ICC/IF analysis of IGF1 in PC3 cells. The cell was stained with ATGA0311 (1:100). The secondary antibody (green) was used Alexa Fluor 488. DAPI was stained the cell nucleus (blue).