

# Human ASF1B antibody

Catalog Number: ATGA0315

## PRODUCT INFORMATION

---

**Catalog number**

ATGA0315

**Clone No.**

AT1D4

**Product type**

Monoclonal Antibody

**UnitProt No.**

Q9NVP2

**NCBI Accession No.**

NP\_060624

**Alternative Names**

ASF1 anti-silencing function 1 homolog B (S.cerevisiae), CIA-II

## PRODUCT SPECIFICATION

---

**Antibody Host**

Mouse

**Reacts With**

Human

**Concentration**

1mg/ml (determined by BCA assay)

**Formulation**

Liquid in. Phosphate-Buffered Saline (pH 7.4) with 0.02% Sodium Azide, 10% glycerol

**Immunogen**

Recombinant human ASF1B (1-202aa) purified from E. coli

**Isotype**

IgG2b kappa

**Purification Note**

By protein-A affinity chromatography

**Application**

ELISA, WB

**Usage**

The antibody has been tested by ELISA, Western blot analysis to assure specificity and reactivity. Since application varies, however, each investigation should be titrated by the reagent to obtain optimal results. Recommended starting dilution is 1:1000

# Human ASF1B antibody

Catalog Number: ATGA0315

## Storage

Can be stored at +2C to +8C for 1 week. For long term storage, aliquot and store at -20C to -80C. Avoid repeated freezing and thawing cycles.

## BACKGROUND

### Description

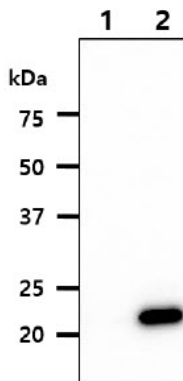
ASF1B is a member of the H3/H4 family of histone chaperone proteins and is similar to the anti-silencing function-1 gene in yeast. The encoded protein is the substrate of the tousel-like kinase family of cell cycle-regulated kinases, and may play a key role in modulating the nucleosome structure of chromatin by ensuring a constant supply of histones at sites of nucleosome assembly. Delivering histone H3/H4 dimers to CAF-1 or HIRA histone deposition complexes to facilitate replication-coupled and replication-independent nucleosome assembly on DNA. Both ASF1A and ASF1B are phosphorylated in S phase by the Tousel-like kinases TLK1 and TLK2, and are dephosphorylated when TLK1 and TLK2 are inactivated by Chk1 kinase in response to replicative stress.

### General References

- Corpet A., et al. (2011) EMBO J 30:480-493  
Mousson F., et al. (2007) Chromosoma 116:79-93  
Hayashi R., et al. (2007) DNA Cell Biol 126:91-99

## DATA

### Western blot analysis (WB)



The cell lysates (10ug) were resolved by SDS-PAGE, transferred to PVDF membrane and probed with anti-human ASF1B antibody (1:1000). Proteins were visualized using a goat anti-mouse secondary antibody conjugated to HRP and an ECL detection system.  
Lane 1.: 293T cell lysate  
Lane 2.: ASF1B transfected 293T cell lysate