

Human CREG/CREG1 antibody

Catalog Number: ATGA0328

PRODUCT INFORMATION

Catalog number

ATGA0328

Clone No.

AT1C6

Product type

Monoclonal Antibody

UnitProt No.

O75629

NCBI Accession No.

NP_003842

Alternative Names

Cellular repressor of E1A-stimulated genes 1, CREG

PRODUCT SPECIFICATION

Antibody Host

Mouse

Reacts With

Human

Concentration

1mg/ml (determined by BCA assay)

Formulation

Liquid in. Phosphate-Buffered Saline (pH 7.4) with 0.02% Sodium Azide, 10% glycerol

Immunogen

Recombinant human CREG1 (32-220aa) purified from E. coli

Isotype

IgG2b kappa

Purification Note

By protein-A affinity chromatography

Application

ELISA, WB

Usage

The antibody has been tested by ELISA and Western blot analysis to assure specificity and reactivity. Since application varies, however, each investigation should be titrated by the reagent to obtain optimal results.

Storage

Human CREG/CREG1 antibody

Catalog Number: ATGA0328

Can be stored at +2C to +8C for 1 week. For long term storage, aliquot and store at -20C to -80C. Avoid repeated freezing and thawing cycles.

BACKGROUND

Description

CREG1 activity may contribute to the transcriptional control of cell growth and differentiation. Antagonizes transcriptional activation and cellular transformation by the adenovirus E1A protein. CREG1 is broadly expressed in adult tissues and is regulated during embryonic development. CREG1 is a secreted glycoprotein which enhances differentiation of mouse embryonic stem cells and human NTERA-2 cells.

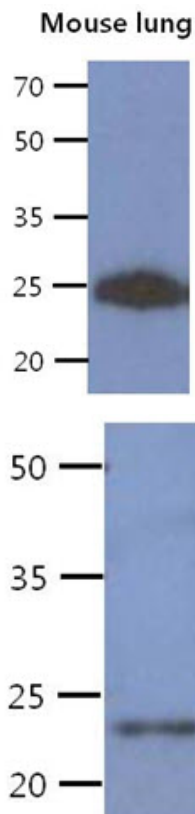
General References

Veal E., et al. (1998) Mol Cell Biol 18(9): 5032-5041.

Veal E., et al. (2000) Oncogene 19(17): 2120-2128.

DATA

Western blot analysis (WB)



The tissue lysate of mouse lung (40ug) was resolved by SDS-PAGE, transferred to PVDF membrane and probed with anti-human CREG1 antibody (1:1000). Proteins were visualized using a goat anti-mouse secondary antibody conjugated to HRP and an ECL detection system.

The Recombinant protein (50ng) was resolved by SDS-PAGE, transferred to PVDF membrane and probed with anti-human CREG1 antibody (1:1000). Proteins were visualized using a goat anti-mouse secondary antibody conjugated to HRP and an ECL detection system.