

Human HABP1/C1QBP antibody

Catalog Number: ATGA0330

PRODUCT INFORMATION

Catalog number

ATGA0330

Clone No.

AT1G7

Product type

Monoclonal Antibody

UnitProt No.

Q07021

NCBI Accession No.

NP_001203

Alternative Names

Complement C1q binding protein, Complement component 1, Q subcomponent binding protein, GC1QBP, Glycoprotein gC1Q-R, gC1qR, Mitochondrial matrix protein p32, ASF/SF2-associated protein p32, SF2p32, C1q globular domain-binding protein, Hyaluronan-binding protein 1, Splicing factor SF2-associated protein

PRODUCT SPECIFICATION

Antibody Host

Mouse

Reacts With

Human

Concentration

1mg/ml (determined by BCA assay)

Formulation

Liquid in. Phosphate-Buffered Saline (pH 7.4) with 0.02% Sodium Azide, 10% glycerol

Immunogen

Recombinant human C1QBP (74-282aa) purified from E.coli

Isotype

IgG1 kappa

Purification Note

By protein-A affinity chromatography

Application

ELISA, WB, ICC/IF

Usage

The antibody has been tested by ELISA, Western blot and ICC/IF analysis to assure specificity and reactivity. Since application varies, however, each investigation should be titrated by the reagent to obtain optimal results.

Human HABP1/C1QBP antibody

Catalog Number: ATGA0330

Storage

Can be stored at +2C to +8C for 1 week. For long term storage, aliquot and store at -20C to -80C. Avoid repeated freezing and thawing cycles.

BACKGROUND

Description

Complement component 1 Q subcomponent-binding protein, mitochondrial is a protein that in humans is encoded by the C1QBP gene. The human complement subcomponent C1q associates with C1r and C1s in order to yield the first component of the serum complement system. The protein encoded by this gene is known to bind to the globular heads of C1q molecules and inhibit C1 activation. This protein has also been identified as the p32 subunit of pre-mRNA splicing factor SF2, as well as a hyaluronic acid-binding protein.

General References

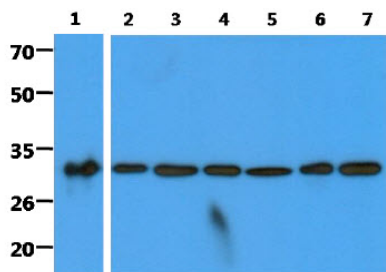
Deb TB, et al. (1996) J Biol Chem 271(4):2206-12.

Ghebrehiwet B, et al. (1994) J Exp Med 179(6):1809-21.

Entrez Gene: C1QBP complement component 1, q subcomponent binding protein.

DATA

Western blot analysis (WB)



The recombinant protein (50ng) and cell lysates (40ug) were resolved by SDS-PAGE, transferred to PVDF membrane and probed with anti-human C1QBP antibody (1:2000). Proteins were visualized using a goat anti-mouse secondary antibody conjugated to HRP and an ECL detection system.

Lane 1 : Recombinant protein

Lane 2 : HeLa cell lysate

Lane 3 : Jurkat cell lysate

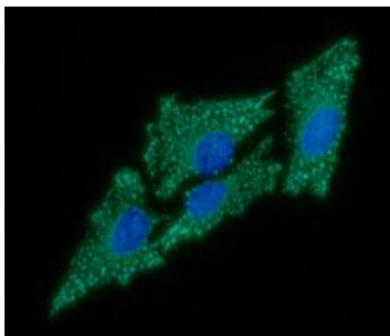
Lane 4 : MCF7 cell lysate

Lane 5 : Ramos cell lysate

Lane 6 : 293T cell lysate

Lane 7 : A549 cell lysate

Immunocytochemistry/Immunofluorescence (ICC/IF)



ICC/IF analysis of C1QBP in HeLa cells. The cell was stained with ATGA0330 (1:100). The secondary antibody (green) was used Alexa Fluor 488. DAPI was stained the cell nucleus (blue).