

Human Aldolase A/ALDOA antibody

Catalog Number: ATGA0341

PRODUCT INFORMATION

Catalog number

ATGA0341

Clone No.

AT3F9

Product type

Monoclonal Antibody

UnitProt No.

P04075

NCBI Accession No.

NP_908930

Alternative Names

Fructose-bisphosphate aldolase A, Lung cancer antigen NY-LU-1, Muscle-type aldolase, ALDA

PRODUCT SPECIFICATION

Antibody Host

Mouse

Reacts With

Human

Concentration

1mg/ml (determined by BCA assay)

Formulation

Liquid in. Phosphate-Buffered Saline (pH 7.4) with 0.02% Sodium Azide, 10% glycerol

Immunogen

Recombinant human ALDOA (1-364aa) purified from E. coli

Isotype

IgG2a kappa

Purification Note

By protein-A affinity chromatography

Application

ELISA, WB, ICC/IF, FACS

Usage

The antibody has been tested by ELISA, Western blot, ICC/IF and FACS analysis to assure specificity and reactivity. Since application varies, however, each investigation should be titrated by the reagent to obtain optimal results.

Human Aldolase A/ALDOA antibody

Catalog Number: ATGA0341

Storage

Can be stored at +2C to +8C for 1 week. For long term storage, aliquot and store at -20C to -80C. Avoid repeated freezing and thawing cycles.

BACKGROUND

Description

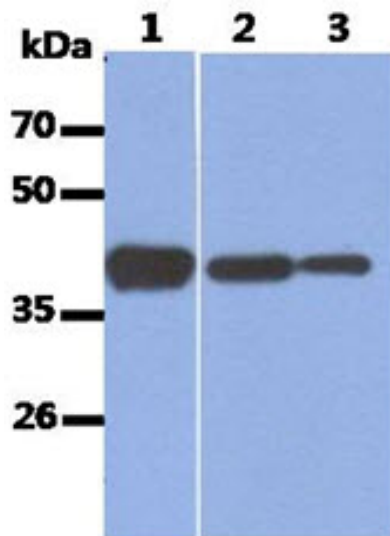
Aldolase (fructose biphosphate aldolase), a glycolytic enzyme, catalyzes the conversion of fructose 1, 6-biphosphate to 3-phosphoglyceraldehyde. This ubiquitous enzyme is present as three different isozymes: aldolase A, aldolase B, and aldolase C. Research studies suggest that aldolase A expression potentially differentiates between nonneoplastic liver diseases and hepatocarcinoma. Aldolase A is found in the developing embryo and is produced in even greater amounts in adult muscle. Aldolase A expression is repressed in adult liver, kidney, and intestine and similar to aldolase C levels in brain and other nervous tissue.

General References

- Castaldo G., et al.(2000) Clin Chem. 46(7): 901-906.
- Long F., et al.(2014) Oncol Rep. 32(5): 2031-2037.
- Caspi M., et al.(2014) Mol Cancer. 13: 164.

DATA

Western blot analysis (WB)



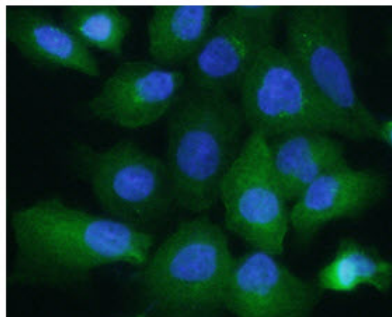
The Recombinant protein and Cell lysates (40ug) were resolved by SDS-PAGE, transferred to PVDF membrane and probed with anti-human ALDOA antibody (1:1000). Proteins were visualized using a goat anti-mouse secondary antibody conjugated to HRP and an ECL detection system.

- Lane 1.: Recombinant Human ALDOA
- Lane 2.: HeLa cell lysate
- Lane 3.: HepG2 cell lysate

Immunocytochemistry/Immunofluorescence (ICC/IF)

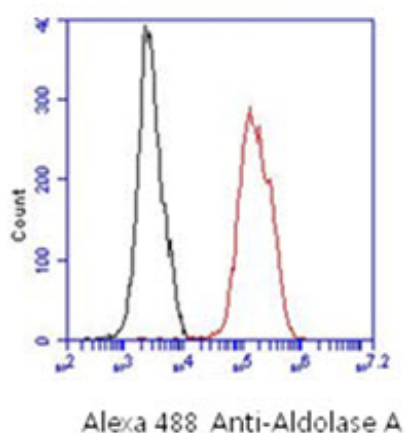
Human Aldolase A/ALDOA antibody

Catalog Number: ATGA0341



ICC/IF analysis of ALDOA in A549 cells. The cell was stained with ATGA0341 (1:100). The secondary antibody (green) was used Alexa Fluor 488. DAPI was stained the cell nucleus (blue).

Flow cytometry (FACS)



Flow cytometry analysis of ALDOA in A549 cell line, staining at 2-5ug for 1×10^6 cells (red line). The secondary antibody used goat anti-mouse IgG Alexa fluor 488 conjugate. Isotype control antibody was mouse IgG (black line).