

# Human beta-III Tubulin antibody

Catalog Number: ATGA0343

## PRODUCT INFORMATION

---

**Catalog number**

ATGA0343

**Clone No.**

AT2F5

**Product type**

Monoclonal Antibody

**UnitProt No.**

Q13509

**NCBI Accession No.**

NP\_006077

**Alternative Names**

Tubulin beta 3 class III, Tubulin, beta 3 class III, beta-4, CDCBM, CFEOM3A, TuBB4, TUBB3, FEOM3, fibrosis of extraocular muscles, congenital

## PRODUCT SPECIFICATION

---

**Antibody Host**

Mouse

**Reacts With**

Human

**Concentration**

1mg/ml (determined by BCA assay)

**Formulation**

Liquid in. Phosphate-Buffered Saline (pH 7.4) with 0.02% Sodium Azide, 10% glycerol

**Immunogen**

Recombinant human TUBB3 (1-450aa) purified from E. coli

**Isotype**

IgG1 kappa

**Purification Note**

By protein-A affinity chromatography

**Application**

ELISA, WB, ICC/IF, FACS

**Usage**

The antibody has been tested by ELISA, Western blot, ICC/IF and FACS analysis to assure specificity and reactivity. Since application varies, however, each investigation should be titrated by the reagent to obtain optimal results.

# Human beta-III Tubulin antibody

Catalog Number: ATGA0343

## Storage

Can be stored at +2C to +8C for 1 week. For long term storage, aliquot and store at -20C to -80C. Avoid repeated freezing and thawing cycles.

## BACKGROUND

### Description

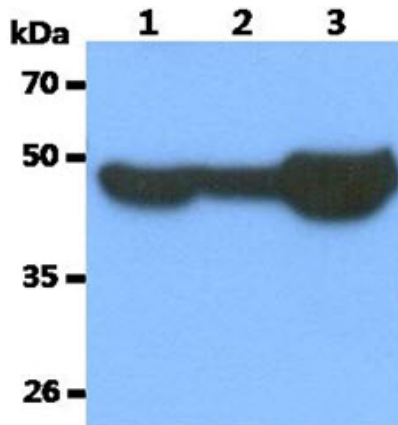
Tubulin Beta 3 is 450 amino acid protein. Tubulin is the major constituent of microtubules. It binds two moles of GTP, one at an exchangeable site on the beta chain and one at a non-exchangeable site on the alpha-chain. TUBB3 plays a critical role in proper axon guidance and maintenance. Its expression is primarily restricted to central and peripheral nervous system.

### General References

- Qu C., et al. (2013) J Cell Sci. 126(14): 3070-3081.  
Marczak A., et al. (2015) Postepy Hig Med Dosw. 69: 158-164.  
McCarroll J.A., et al. (2015) Cancer Res. 75(2): 415-425.

## DATA

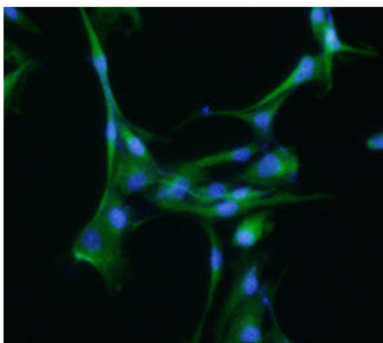
### Western blot analysis (WB)



The cell lysates (40ug) and tissue lysate (40ug) were resolved by SDS-PAGE, transferred to PVDF membrane and probed with anti-human Tubulin Beta 3 antibody (1:1000). Proteins were visualized using a goat anti-mouse secondary antibody conjugated to HRP and an ECL detection system.

- Lane 1.: HeLa cell lysate  
Lane 2.: 293T cell lysate  
Lane 3.: Mouse Brain tissue lysate

### Immunocytochemistry/Immunofluorescence (ICC/IF)

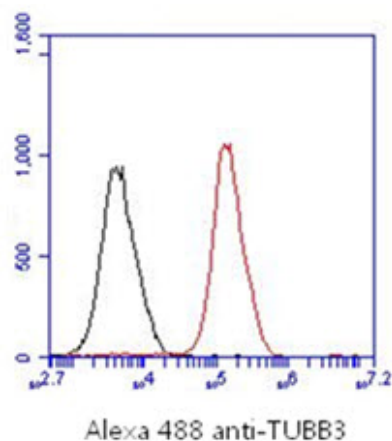


ICC/IF analysis of Tubulin Beta 3 in U-87MG cells. The cell was stained with ATGA0343 (1:100). The secondary antibody (green) was used Alexa Fluor 488. DAPI was stained the cell nucleus (blue).

### Flow cytometry (FACS)

## Human beta-III Tubulin antibody

Catalog Number: ATGA0343



Flow cytometry analysis of Tubulin Beta 3 in U-87MG cell line, staining at 2-5ug for  $1 \times 10^6$  cells (red line). The secondary antibody used goat anti-mouse IgG Alexa fluor 488 conjugate. Isotype control antibody was mouse IgG (black line).