

# Human Glypican 4/GPC4 antibody

Catalog Number: ATGA0346

## PRODUCT INFORMATION

---

**Catalog number**

ATGA0346

**Clone No.**

AT51E3

**Product type**

Monoclonal Antibody

**UnitProt No.**

O75487

**NCBI Accession No.**

NP\_001439

**Alternative Names**

Glypican 4, Glypican 4, dj900E8.1, glypican proteoglycan 4

## PRODUCT SPECIFICATION

---

**Antibody Host**

Mouse

**Reacts With**

Human

**Concentration**

1mg/ml (determined by BCA assay)

**Formulation**

Liquid in. Phosphate-Buffered Saline (pH 7.4) with 0.02% Sodium Azide, 10% glycerol

**Immunogen**

Recombinant human GPC4 (401-529aa) purified from E. coli

**Isotype**

IgG2a kappa

**Purification Note**

By protein-A affinity chromatography

**Application**

ELISA, WB, ICC/IF, FACS

**Usage**

The antibody has been tested by ELISA, Western blot, ICC/IF and FACS analysis to assure specificity and reactivity. Since application varies, however, each investigation should be titrated by the reagent to obtain optimal results.

# Human Glypican 4/GPC4 antibody

Catalog Number: ATGA0346

## Storage

Can be stored at +2C to +8C for 1 week. For long term storage, aliquot and store at -20C to -80C. Avoid repeated freezing and thawing cycles.

## BACKGROUND

### Description

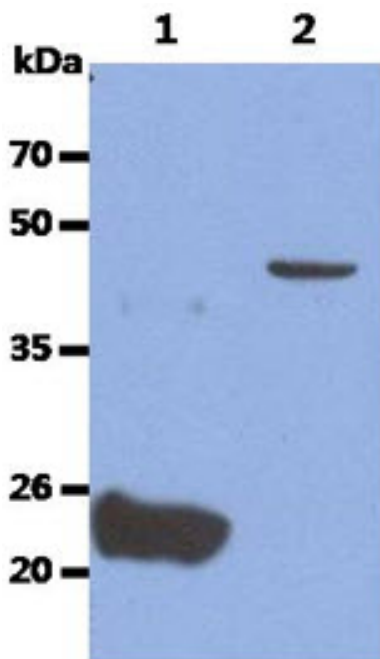
The Glypican (GPC) family of cell surface heparan sulfate proteoglycans is expressed in a tissue specific and developmentally regulated fashion. Expression of Glypican 4 has been reported in the mouse brain at embryonic day 10 and later stages and low during early tubule formation but is up-regulated in mature tubules. Accordingly it is not detected in the midline of the embryo at the initial stage of neural tube closure, suggesting that GPC4 is unlikely to play an essential role in convergent extension in the mouse.

### General References

- Ybot-Gonzalez P., et al. (2005) Dev Dyn. 233(3): 1013-1017.
- Karihaloo A., et al. (2004) Mol Cell Biol. 24(19): 8745-8752.
- Ohkawara B., et al. (2003) Development. 130(10): 2129-2138.

## DATA

### Western blot analysis (WB)



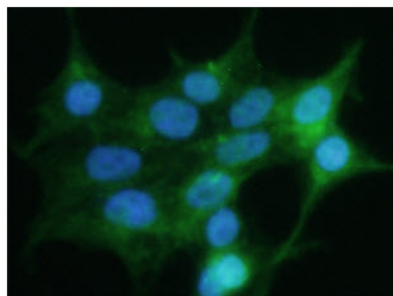
The Recombinant protein (50ng) and Cell lysate (40ug) were resolved by SDS-PAGE, transferred to PVDF membrane and probed with anti-human GPC4 antibody (1:1000). Proteins were visualized using a goat anti-mouse secondary antibody conjugated to HRP and an ECL detection system.

- Lane 1. : Recombinant Human GPC4
- Lane 2. : Ramos cell lysate

### Immunocytochemistry/Immunofluorescence (ICC/IF)

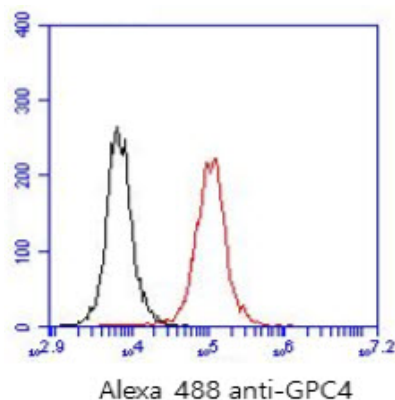
## Human Glypican 4/GPC4 antibody

Catalog Number: ATGA0346



ICC/IF analysis of GPC4 in 293T cells. The cell was stained with ATGA0346 (1:100). The secondary antibody (green) was used Alexa Fluor 488. DAPI was stained the cell nucleus (blue).

### Flow cytometry (FACS)



Flow cytometry analysis of GPC4 in 293T cell line, staining at 2-5ug for  $1 \times 10^6$  cells (red line). The secondary antibody used goat anti-mouse IgG Alexa fluor 488 conjugate. Isotype control antibody was mouse IgG (black line).