

Human TBCEL antibody

Catalog Number: ATGA0351

PRODUCT INFORMATION

Catalog number

ATGA0351

Clone No.

AT1B10

Product type

Monoclonal Antibody

UnitProt No.

Q5QJ74

NCBI Accession No.

NP_689928

Alternative Names

Tubulin-specific chaperone cofactor E-like protein, EI, LRRC35

PRODUCT SPECIFICATION

Antibody Host

Mouse

Reacts With

Human

Concentration

1mg/ml (determined by BCA assay)

Formulation

Liquid in. Phosphate-Buffered Saline (pH 7.4) with 0.02% Sodium Azide, 10% glycerol

Immunogen

Recombinant human TBCEL (1-424aa) purified from E. coli

Isotype

IgG2b kappa

Purification Note

By protein-A affinity chromatography

Application

ELISA, WB, ICC/IF, FACS

Usage

The antibody has been tested by ELISA, Western blot, ICC/IF and FACS analysis to assure specificity and reactivity. Since application varies, however, each investigation should be titrated by the reagent to obtain optimal results.

Human TBCEL antibody

Catalog Number: ATGA0351

Storage

Can be stored at +2C to +8C for 1 week. For long term storage, aliquot and store at -20C to -80C. Avoid repeated freezing and thawing cycles.

BACKGROUND

Description

Tubulin-specific chaperone cofactor E-like protein, also known as TBCEL, is a factor that regulates the microtubule cytoskeleton in determining cell behavior.

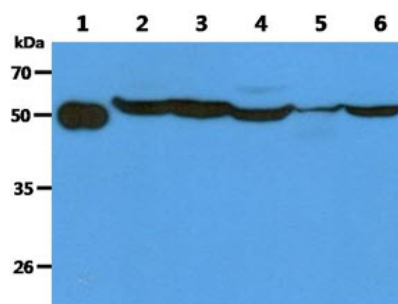
General References

Bartolini F., et al. (2005) J Biomed Sci. 118: 1197-1207.

Ota T., et al. (2004) Nat Genet. 36: 40-45.

DATA

Western blot analysis (WB)



The Recombinant Human TBCEL (50ng) and Cell lysates (40ug) were resolved by SDS-PAGE, transferred to PVDF membrane and probed with anti-human TBCEL antibody (1:1000). Proteins were visualized using a goat anti-mouse secondary antibody conjugated to HRP and an ECL detection system.

Lane 1.: Recombinant Human TBCEL

Lane 2.: PC3 cell lysate

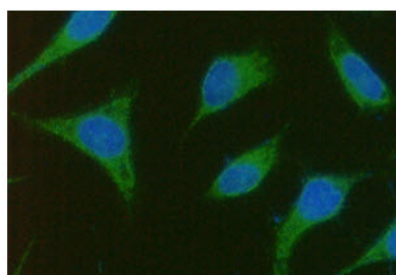
Lane 3.: LNCap cell lysate

Lane 4 : 293T cell lysate

Lane 5.: Mouse testis lysate

Lane 6.: Mouse Kidney lysate

Immunocytochemistry/Immunofluorescence (ICC/IF)

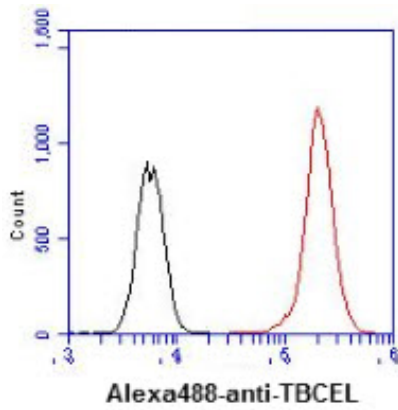


ICC/IF analysis of TBCEL in PC3 cells. The cell was stained with ATGA0351 (1:100). The secondary antibody (green) was used Alexa Fluor 488. DAPI was stained the cell nucleus (blue).

Flow cytometry (FACS)

Human TBCEL antibody

Catalog Number: ATGA0351



Flow cytometry analysis of TBCEL in PC3 cell line, staining at 2-5ug for 1×10^6 cells (red line). The secondary antibody used goat anti-mouse IgG Alexa fluor 488 conjugate. Isotype control antibody was mouse IgG (black line).