

Human PGAM1 antibody

Catalog Number: ATGA0352

PRODUCT INFORMATION

Catalog number

ATGA0352

Clone No.

AT1G4

Product type

Monoclonal Antibody

UnitProt No.

P18669

NCBI Accession No.

NP_002620

Alternative Names

Phosphoglycerate mutase 1, Phosphoglycerate mutase isozyme B, PGAM-B, PGAMA, Phosphoglycerate mutase 1

PRODUCT SPECIFICATION

Antibody Host

Mouse

Reacts With

Human

Concentration

1mg/ml (determined by BCA assay)

Formulation

Liquid in. Phosphate-Buffered Saline (pH 7.4) with 0.02% Sodium Azide, 10% glycerol

Immunogen

Recombinant human PGAM1 (1-254aa) purified from E. coli

Isotype

IgG2a Lambda

Purification Note

By protein-A affinity chromatography

Application

ELISA, WB, ICC/IF

Usage

The antibody has been tested by ELISA, Western blot and ICC/IF analysis to assure specificity and reactivity. Since application varies, however, each investigation should be titrated by the reagent to obtain optimal results.

Storage

Human PGAM1 antibody

Catalog Number: ATGA0352

Can be stored at +2C to +8C for 1 week. For long term storage, aliquot and store at -20C to -80C. Avoid repeated freezing and thawing cycles.

BACKGROUND

Description

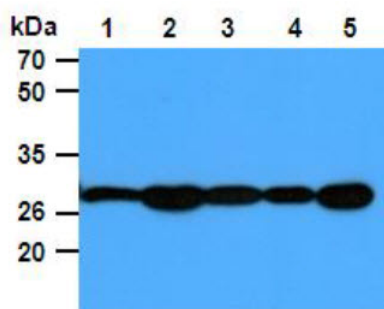
PGAM1 belongs to the phosphoglycerate mutase family. This protein is important components of glucose and 2, 3-BPGA (2, 3-bisphosphoglycerate) metabolism and catalyzes the reversible reaction of 3-phosphoglycerate (3-PGA) to 2-phosphoglycerate (2-PGA) in the glycolytic pathway. The PGAM is a dimeric enzyme containing, in different tissues, different proportions of a slow-migrating muscle (MM) isozyme, a fast-migrating brain (BB) isozyme, and a hybrid form (MB). Mutations in this protein cause muscle phosphoglycerate mutase deficiency, also known as glycogen storage disease X.

General References

Vander-Heiden MG., et al. (2010) Science. 329: 1492-1499.
Jacobowitz DM., et al. (2008) Microvasc Res. 76: 89-93.

DATA

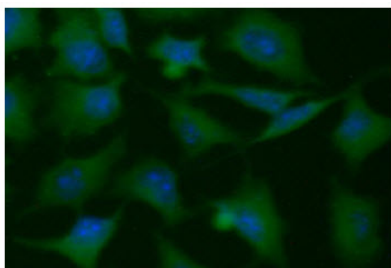
Western blot analysis (WB)



The cell lysates (40ug) were resolved by SDS-PAGE, transferred to PVDF membrane and probed with anti-human PGAM1 antibody (1:1000). Proteins were visualized using a goat anti-mouse secondary antibody conjugated to HRP and an ECL detection system.

Lane 1. : 293T cell lysate
Lane 2. : Jurkat cell lysate
Lane 3. : Raji cell lysate
Lane 4. : A431 cell lysate
Lane 5. : HeLa cell lysate

Immunocytochemistry/Immunofluorescence (ICC/IF)



ICC/IF analysis of PGAM1 in HeLa cells. The cell was stained with ATGA0352 (1:100). The secondary antibody (green) was used Alexa Fluor 488. DAPI was used to stain the cell nuclei (blue).