

Human COMMD7 antibody

Catalog Number: ATGA0354

PRODUCT INFORMATION

Catalog number

ATGA0354

Clone No.

AT49B5

Product type

Monoclonal Antibody

UnitProt No.

Q86VX2

NCBI Accession No.

NP_444269

Alternative Names

COMM domain-containing protein 1, C2orf5, MuRR1, COMM domain-containing protein 1, COMMD-1, COMMD 1, COMM, MuRR 1, MuRR-1

PRODUCT SPECIFICATION

Antibody Host

Mouse

Reacts With

Human

Concentration

1mg/ml (determined by BCA assay)

Formulation

Liquid in. Phosphate-Buffered Saline (pH 7.4) with 0.02% Sodium Azide, 10% glycerol

Immunogen

Recombinant human COMMD7(1-200aa)purified from E. coli

Isotype

IgG3 kappa

Purification Note

By protein-A affinity chromatography

Application

ELISA,WB,ICC/IF

Usage

The antibody has been tested by ELISA, Western blot and ICC/IF analysis to assure specificity and reactivity. Since application varies, however, each investigation should be titrated by the reagent to obtain optimal results.

Human COMMD7 antibody

Catalog Number: ATGA0354

Storage

Can be stored at +2C to +8C for 1 week. For long term storage, aliquot and store at -20C to -80C. Avoid repeated freezing and thawing cycles.

BACKGROUND

Description

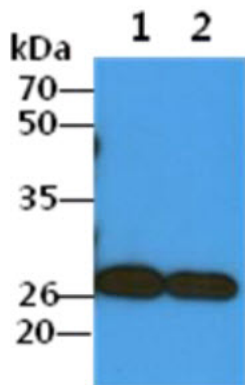
COMMD family members are a group of evolutionary conserved proteins that share a common COMM domain at the extreme C-terminus, which provides an interface for protein-protein interactions. COMMD proteins may also play a role in the function of epithelial sodium channels, cell proliferation, and copper homeostasis and in the regulation of the ubiquitin pathway. With highest expression in lung, COMMD7 (COMM domain-containing protein 7) is a 200 amino acid protein that binds COMMD1 via its COMM domain.

General References

Burstein E., et al. (2005) J Biol Chem. 280 (23): 22222-22232.
De Bie P., et al. (2006) Biochem J. 398(1): 63-71.

DATA

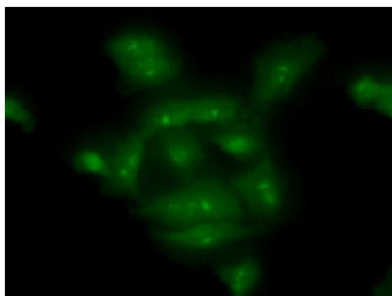
Western blot analysis (WB)



The cell lysates (40ug) were resolved by SDS-PAGE, transferred to PVDF membrane and probed with anti-human COMMD7 antibody (1:1000). Proteins were visualized using a goat anti-mouse secondary antibody conjugated to HRP and an ECL detection system.

Lane 1.: A549 cell lysate
Lane 2.: HepG2 cell lysate

Immunocytochemistry/Immunofluorescence (ICC/IF)



ICC/IF analysis of COMMD7 in A549 cells line, stained with monoclonal anti-human COMMD7 antibody (1:100) with goat anti-mouse IgG-Alexa fluor 488 conjugate (Green).