

Human Chondrolectin antibody

Catalog Number: ATGA0356

PRODUCT INFORMATION

Catalog number

ATGA0356

Clone No.

AT25G6

Product type

Monoclonal Antibody

UnitProt No.

Q9H9P2

NCBI Accession No.

NP_079220

Alternative Names

Chondrolectin isoform a, C21orf68, MT75, PRED12

PRODUCT SPECIFICATION

Antibody Host

Mouse

Reacts With

Human

Concentration

1mg/ml (determined by BCA assay)

Formulation

Liquid in. Phosphate-Buffered Saline (pH 7.4) with 0.02% Sodium Azide, 10% glycerol

Immunogen

Recombinant human CHODL (22-216aa) purified from E. coli

Isotype

IgG2b kappa

Purification Note

By protein-A affinity chromatography

Application

ELISA, WB

Usage

The antibody has been tested by ELISA, Western blot analysis to assure specificity and reactivity. Since application varies, however, each investigation should be titrated by the reagent to obtain optimal results. Recommended starting dilution for Western blot analysis is 1:1000.

Human Chondrolectin antibody

Catalog Number: ATGA0356

Storage

Can be stored at +2C to +8C for 1 week. For long term storage, aliquot and store at -20C to -80C. Avoid repeated freezing and thawing cycles.

BACKGROUND

Description

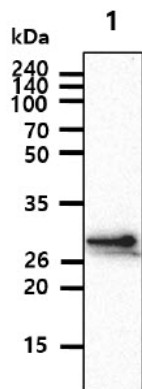
Chondrolectin is an N-glycosylated, single pass type I membrane protein that localizes to the endoplasmic reticulum (ER) -Golgi apparatus. Chondrolectin contains one carbohydrate recognition (CRD) domain and is predominantly expressed in vascular muscle of testis, red pulp of spleen and smooth muscle of prostate. Chondrolectin is also found in heart muscle, skeletal muscle, and small intestine. At least two other isoforms of Chondrolectin exist due to alternative splicing.

General References

Claessens A., et al. (2007) Cell Biol Int. 31(11): 1323-1330.
Weng L., et al. (2002) Genomics. 80(1): 62-70.

DATA

Western blot analysis (WB)



The Cell lysates (40ug) were resolved by SDS-PAGE, transferred to PVDF membrane and probed with anti-human CHODL antibody (1:1000). Proteins were visualized using a goat anti-mouse secondary antibody conjugated to HRP and an ECL detection system.

Lane 1.: Jurkat cell lysate
Lane 2.: HaCaT cell lysate
Lane 3.: HepG2 cell lysate
Lane 4.: HeLa cell lysate