

Human BCAT1 antibody

Catalog Number: ATGA0359

PRODUCT INFORMATION

Catalog number

ATGA0359

Clone No.

AT3C8

Product type

Monoclonal Antibody

UnitProt No.

P54687

NCBI Accession No.

NP_005495

Alternative Names

Branched chain amino-acid transaminase cytosolic, Branched chain amino-acid transaminase, cytosolic, BCATC, BCT1, ECA39, MECA39, PNAS121, PP18

PRODUCT SPECIFICATION

Antibody Host

Mouse

Reacts With

Human

Concentration

1mg/ml (determined by BCA assay)

Formulation

Liquid in. Phosphate-Buffered Saline (pH 7.4) with 0.02% Sodium Azide, 10% glycerol

Immunogen

Recombinant human BCAT1 (1-386aa) purified from E. coli

Isotype

IgG1 kappa

Purification Note

By protein-A affinity chromatography

Application

ELISA, WB

Usage

The antibody has been tested by ELISA and Western blot analysis to assure specificity and reactivity. Since application varies, however, each investigation should be titrated by the reagent to obtain optimal results.

Human BCAT1 antibody

Catalog Number: ATGA0359

Storage

Can be stored at +2C to +8C for 1 week. For long term storage, aliquot and store at -20C to -80C. Avoid repeated freezing and thawing cycles.

BACKGROUND

Description

BCAT1, also known as branched chain amino-acid transaminase (cytosolic form), catalyzes the reversible transamination of branched-chain alpha-keto acids to branched-chain L-amino acids essential for cell growth. Two different clinical disorders have been attributed to a defect of branched-chain amino acid transamination: hypervalinemia and hyperleucine-isoleucinemia. BCAT1 is expressed in the brain and kidney. Overexpressed in MYC-induced tumors such as Burkitt's lymphoma.

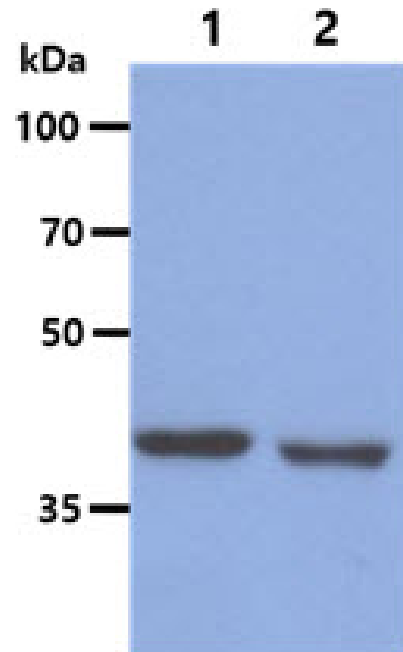
General References

Goto M., et al. (2005) J Biol Chem. 280: 37246-37256.

Schuldiner O., et al. (1996) Proc Natl Acad Sci USA. 93: 7143-7148.

DATA

Western blot analysis (WB)



The cell lysates (40ug) were resolved by SDS-PAGE, transferred to PVDF membrane and probed with anti-human BCAT1 antibody (1:1000). Proteins were visualized using a goat anti-mouse secondary antibody conjugated to HRP and an ECL detection system.

Lane 1. : Jurkat cell lysate

Lane 2. : HeLa cell lysate