

# Human Fascin/FSCN1 antibody

Catalog Number: ATGA0361

## PRODUCT INFORMATION

---

**Catalog number**

ATGA0361

**Clone No.**

AT13D2

**Product type**

Monoclonal Antibody

**UnitProt No.**

Q16658

**NCBI Accession No.**

NP\_003079

**Alternative Names**

Fascin, FAN1, HSN, SNL, Fascin

## PRODUCT SPECIFICATION

---

**Antibody Host**

Mouse

**Reacts With**

Human

**Concentration**

1mg/ml (determined by BCA assay)

**Formulation**

Liquid in. Phosphate-Buffered Saline (pH 7.4) with 0.02% Sodium Azide, 10% glycerol

**Immunogen**

Recombinant human FSCN1 (1-493aa) purified from E. coli

**Isotype**

IgG2b kappa

**Purification Note**

By protein-A affinity chromatography

**Application**

ELISA, WB, ICC/IF, FACS

**Usage**

The antibody has been tested by ELISA, Western blot, ICC/IF and FACS analysis to assure specificity and reactivity. Since application varies, however, each investigation should be titrated by the reagent to obtain optimal results.

# Human Fascin/FSCN1 antibody

Catalog Number: ATGA0361

## Storage

Can be stored at +2C to +8C for 1 week. For long term storage, aliquot and store at -20C to -80C. Avoid repeated freezing and thawing cycles.

## BACKGROUND

### Description

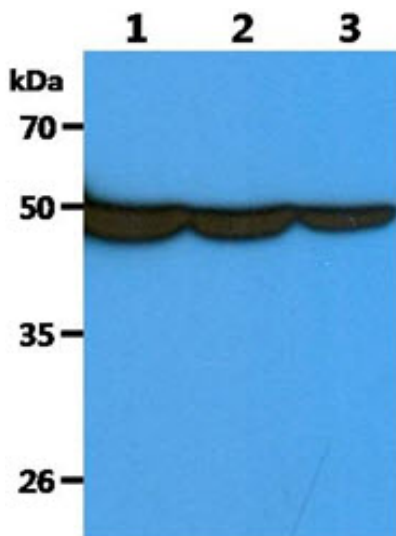
FSCN1 is an actin-bundling protein that provides rigidity to filopodial bundles to efficiently push the membrane forward during cytoskeleton remodeling and cell migration. Probably involved in the assembly of actin filament bundles present in microspikes, membrane ruffles, and stress fibers. And this protein is absent from most normal epithelia yet is upregulated in multiple forms of human carcinoma, where its expression correlates clinically with a poor prognosis. FSCN1 expression has been localized to neurons, glial cells, and endothelial cells.

### General References

Wu D., et al. (2010) *Ann Oncol.* 21(3): 589-596.  
Shin H., et al. (2009) *Phys Rev Left.* 103(23): 238102.

## DATA

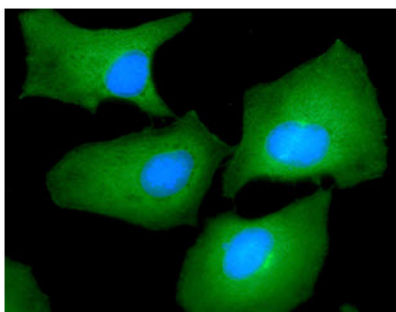
### Western blot analysis (WB)



The Cell lysates (40ug) were resolved by SDS-PAGE, transferred to PVDF membrane and probed with anti-human FSCN1 antibody (1:1000). Proteins were visualized using a goat anti-mouse secondary antibody conjugated to HRP and an ECL detection system.

Lane 1. : HeLa cell lysate  
Lane 2. : HepG2 cell lysate  
Lane 3. : THP-1 cell lysate

### Immunocytochemistry/Immunofluorescence (ICC/IF)

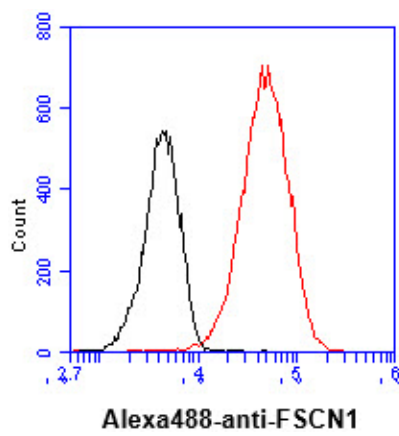


ICC/IF analysis of FSCN1 in HeLa cells. The cell was stained with ATGA0361 (1:100). The secondary antibody (green) was used Alexa Fluor 488. DAPI was stained the cell nucleus (blue).

## Human Fascin/FSCN1 antibody

Catalog Number: ATGA0361

### Flow cytometry (FACS)



Flow cytometry analysis of FSCN1 in HeLa cell line, staining at 2-5ug for  $1 \times 10^6$  cells (red line). The secondary antibody used goat anti-mouse IgG Alexa fluor 488 conjugate. Isotype control antibody was mouse IgG (black line).