

Human HINT2 antibody

Catalog Number: ATGA0378

PRODUCT INFORMATION

Catalog number

ATGA0378

Clone No.

AT5B10

Product type

Monoclonal Antibody

UnitProt No.

Q9BX68

NCBI Accession No.

NP_115982

Alternative Names

Histidine triad nucleotide-binding protein 2, HIT-17

PRODUCT SPECIFICATION

Antibody Host

Mouse

Reacts With

Human

Concentration

1mg/ml (determined by BCA assay)

Formulation

Liquid in. Phosphate-Buffered Saline (pH 7.4) with 0.02% Sodium Azide, 10% glycerol

Immunogen

Recombinant human HINT2 (18-163aa) purified from E. coli

Isotype

IgG1 kappa

Purification Note

By protein-A affinity chromatography

Application

ELISA, WB

Usage

The antibody has been tested by ELISA, Western blot analysis and Flow cytometry to assure specificity and reactivity. Since application varies, however, each investigation should be titrated by the reagent to obtain optimal results.

Human HINT2 antibody

Catalog Number: ATGA0378

Storage

Can be stored at +2C to +8C for 1 week. For long term storage, aliquot and store at -20C to -80C. Avoid repeated freezing and thawing cycles.

BACKGROUND

Description

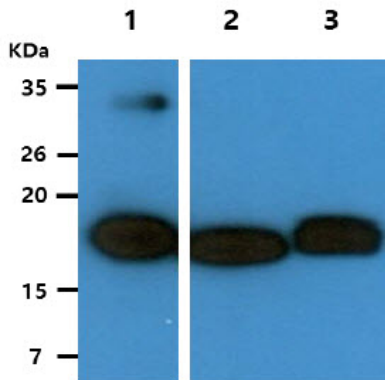
Histidine triad nucleotide binding protein 2 (HINT2) is a mitochondrial protein. This protein is an AMP-lysine hydrolase and phosphoamidase and may contribute to tumor suppression. This protein is a member of the HIT superfamily and Hint subfamily, which are characterized as nucleotide hydrolases and transferases that act on the alpha-phosphate of ribonucleotides. HINT2 regulates steroidogenesis through calcium-dependent and calcium-independent signalling pathways that may serve to maintain a favorable mitochondrial potential. Its role in calcium homeostasis may also contribute to its proapoptotic function in hepatocytes and other non-steroidogenic cells, though the exact mechanism remains unclear.

General References

- Maize KM., et al. (2013) The FEBS journal. 280(14): 3389-3398.
Lenglet S., et al. (2008) Endocrinology. 149(11): 5461-5469.
Martin J., et al. (2006) Gastroenterology. 130(7): 2179-2188.
Lee LR., et al. (2013) Cancer prevention research. 6(7): 731-743.

DATA

Western blot analysis (WB)



The recombinant human HINT2 (50ng) and Cell lysates (40ug) were resolved by SDS-PAGE, transferred to PVDF membrane and probed with anti-human HINT2 antibody (1:1000). Proteins were visualized using a goat anti-mouse secondary antibody conjugated to HRP and an ECL detection system.

Lane 1. : HINT2 Recombinant protein

Lane 2. : HepG2 cell lysate

Lane 3. : U87MG cell lysate