

# Human Otubain-1/OTUB1 antibody

Catalog Number: ATGA0380

## PRODUCT INFORMATION

---

**Catalog number**

ATGA0380

**Clone No.**

AT17E10

**Product type**

Monoclonal Antibody

**UnitProt No.**

Q96FW1

**NCBI Accession No.**

NP\_060140

**Alternative Names**

ubiquitin thioesterase Otubain 1, OTB1, OTu1, ubiquitin thioesterase Otubain 1 Deubiquitinating enzyme OTuB1, OTu domain containing ubiquitin aldehyde binding protein 1, Otubain 1, ubiquitin specific processing protease OTuB1, ubiquitin thioesterase OTuB1.

## PRODUCT SPECIFICATION

---

**Antibody Host**

Mouse

**Reacts With**

Human

**Concentration**

1mg/ml (determined by BCA assay)

**Formulation**

Liquid in. Phosphate-Buffered Saline (pH 7.4) with 0.02% Sodium Azide, 10% glycerol

**Immunogen**

Recombinant human OTUB1 (1-271aa) purified from E. coli

**Isotype**

IgG1 kappa

**Purification Note**

By protein-A affinity chromatography

**Application**

ELISA, WB, ICC/IF

**Usage**

The antibody has been tested by ELISA, Western blot analysis, ICC/IF and Flow cytometry to assure specificity and reactivity. Since application varies, however, each investigation should be titrated by the reagent to obtain optimal results.

# Human Otubain-1/OTUB1 antibody

Catalog Number: ATGA0380

## Storage

Can be stored at +2C to +8C for 1 week. For long term storage, aliquot and store at -20C to -80C. Avoid repeated freezing and thawing cycles.

## BACKGROUND

### Description

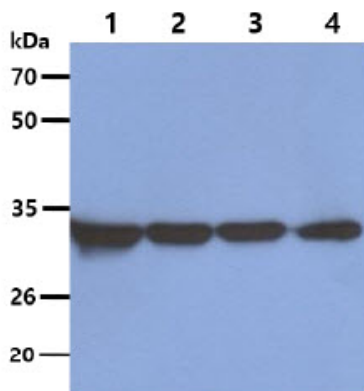
Otubain 1, also known as OTUB1, is a member of the OTU (ovarian tumor) superfamily of predicted cysteine proteases and inhibits cytokine gene transcription in the immune system via its interaction with an ubiquitin protease and E3 ubiquitin ligase. This protein is a highly specific ubiquitin iso-peptidase, and cleaves ubiquitin from branched poly-ubiquitin chains but not from ubiquitinated substrates. It is proposed to function in specific ubiquitin-dependent pathways, possibly by providing an editing function of polyubiquitin chain growth.

### General References

Balakirev MY., et al. (2003) EMBO Rep. 4(5): 5175-5122.  
Soares L., et al. (2004) Nat Immunol. 5(1): 45-54.

## DATA

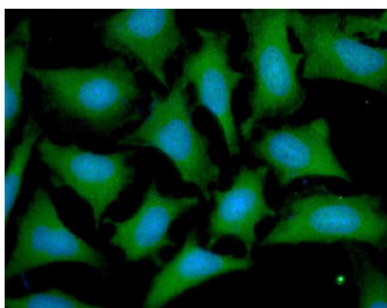
### Western blot analysis (WB)



The Cell lysates (40ug) were resolved by SDS-PAGE, transferred to PVDF membrane and probed with anti-human OTUB1 antibody (1:5000). Proteins were visualized using a goat anti-mouse secondary antibody conjugated to HRP and an ECL detection system.

Lane 1. : A549 cell lysate  
Lane 2. : HeLa cell lysate  
Lane 3. : HepG2 cell lysate  
Lane 4. : 293T cell lysate

### Immunocytochemistry/Immunofluorescence (ICC/IF)



ICC/IF analysis of OTUB1 in HeLa cells line, stained with DAPI (Blue) for nucleus staining and monoclonal anti-human OTUB1 antibody (1:100) with goat anti-mouse IgG-Alexa fluor 488 conjugate (Green).