

Human PGK1 antibody

Catalog Number: ATGA0381

PRODUCT INFORMATION

Catalog number

ATGA0381

Clone No.

AT2F4

Product type

Monoclonal Antibody

UnitProt No.

P00558

NCBI Accession No.

NP_000282

Alternative Names

Phosphoglycerate kinase 1, Cell migration-inducing gene 10 protein, Primer recognition protein 2, PRP 2, PGKA, MIG10

PRODUCT SPECIFICATION

Antibody Host

Mouse

Reacts With

Human

Concentration

1mg/ml (determined by BCA assay)

Formulation

Liquid in. Phosphate-Buffered Saline (pH 7.4) with 0.02% Sodium Azide, 10% glycerol

Immunogen

Recombinant human PGK1 (1-417aa) purified from E. coli

Isotype

IgG1 kappa

Purification Note

By protein-A affinity chromatography

Application

ELISA, WB, ICC/IF

Usage

The antibody has been tested by ELISA, Western blot analysis, ICC/IF and Flow cytometry to assure specificity and reactivity. Since application varies, however, each investigation should be titrated by the reagent to obtain optimal results.

Human PGK1 antibody

Catalog Number: ATGA0381

Storage

Can be stored at +2C to +8C for 1 week. For long term storage, aliquot and store at -20C to -80C. Avoid repeated freezing and thawing cycles.

BACKGROUND

Description

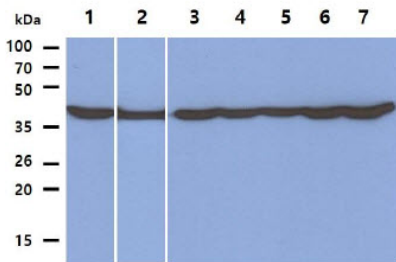
Phosphoglycerate kinase 1 (PGK1) is an X-linked enzyme that plays a key role in the glycolytic pathway. The gene encoding the erythrocyte enzyme PGK1 and it seems that PGK-1 acts as a polymerase alpha cofactor protein (primer recognition protein) as a glyxolytic enzyme role. The PGK1 catalyzes the reversible conversion of 1, 3-diphosphoglycerate to 3-phosphoglycerate during glycolysis, generating one molecule of ATP.

General References

Svaasand EK., et al. (2007) Muscle Nerve. 36(5): 679-684.
Valentin C., et al. (1998) Hum Mutat. 12(4): 280-287.

DATA

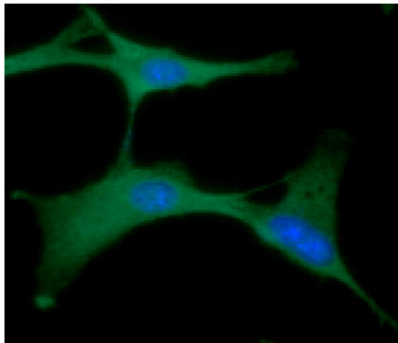
Western blot analysis (WB)



Cell lysates (40ug) were resolved by SDS-PAGE, transferred to PVDF membrane and probed with anti-human PGK1 antibody (1:1000). Proteins were visualized using a goat anti-mouse secondary antibody conjugated to HRP and an ECL detection system.

Lane 1. : HeLa cell lysate
Lane 2. : LNCaP cell lysate
Lane 3. : A549 cell lysate
Lane 4. : HepG2 cell lysate
Lane 5. : 293T cell lysate
Lane 6. : K562 cell lysate
Lane 7. : Jurkat cell lysate

Immunocytochemistry/Immunofluorescence (ICC/IF)



ICC/IF analysis of PGK1 in U87MG cells line, stained with DAPI (Blue) for nucleus staining and monoclonal anti-human PGK1 antibody (1:100) with goat anti-mouse IgG-Alexa fluor 488 conjugate (Green).