

Human S100A4 antibody

Catalog Number: ATGA0384

PRODUCT INFORMATION

Catalog number

ATGA0384

Clone No.

AT1C3

Product type

Monoclonal Antibody

UnitProt No.

P26447

NCBI Accession No.

NP_002952

Alternative Names

S100 calcium binding protein A4, 18A2, 42a, Capl, FSp1, metastasin, Mts1, PeL98, pk9a

PRODUCT SPECIFICATION

Antibody Host

Mouse

Reacts With

Human

Concentration

1mg/ml (determined by BCA assay)

Formulation

Liquid in. Phosphate-Buffered Saline (pH 7.4) with 0.02% Sodium Azide, 10% glycerol

Immunogen

Recombinant human S100A4 (1-101aa) purified from E. coli

Isotype

IgG2b kappa

Purification Note

By protein-A affinity chromatography

Application

ELISA, WB, ICC/IF

Usage

The antibody has been tested by ELISA, Western blot and ICC/IF analysis to assure specificity and reactivity. Since application varies, however, each investigation should be titrated by the reagent to obtain optimal results.

Storage

Human S100A4 antibody

Catalog Number: ATGA0384

Can be stored at +2C to +8C for 1 week. For long term storage, aliquot and store at -20C to -80C. Avoid repeated freezing and thawing cycles.

BACKGROUND

Description

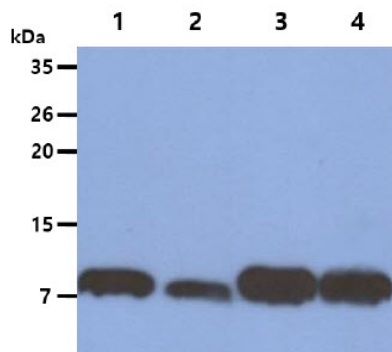
S100 calcium-binding protein A4 (S100A4) is member of the S100 family of proteins containing 2 EF-hand calcium-binding motifs. S100 proteins are localized in the cytoplasm and/or nucleus of a wide range of cells, and involved in the regulation of a number of cellular processes such as cell cycle progression and differentiation. This protein may function in motility, invasion, and tubulin polymerization. Chromosomal rearrangements and altered expression of this gene have been implicated in tumor metastasis. Multiple alternatively spliced variants, encoding the same protein, have been identified.

General References

- Stoler A., et al. (1985) Proc Natl Acad Sci USA. 82(2): 570-574.
- Choudhary C., et al. (2009) Science. 325: 834-840.
- Bian Y., et al. (2014) J Proteomics. 96: 253-262.

DATA

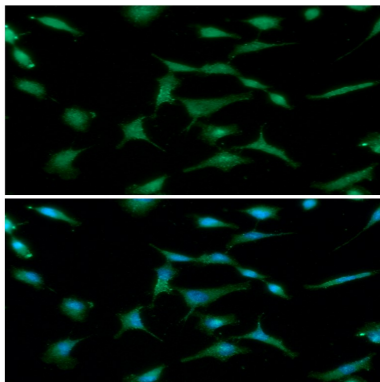
Western blot analysis (WB)



The Cell lysates (40ug) were resolved by SDS-PAGE, transferred to PVDF membrane and probed with anti-human S100A4 antibody (1:1000). Proteins were visualized using a goat anti-mouse secondary antibody conjugated to HRP and an ECL detection system.

- Lane 1. : HeLa cell lysate
- Lane 2. : A549 cell lysate
- Lane 3. : NIH/3T3 cell lysate
- Lane 4. : 3T3-L1 cell lysate

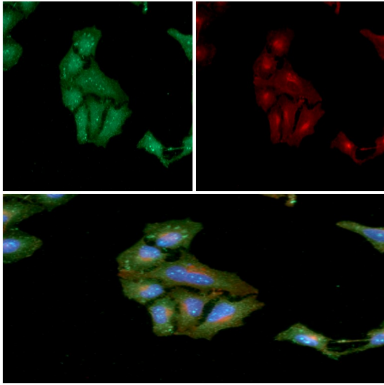
Immunocytochemistry/Immunofluorescence (ICC/IF)



ICC/IF analysis of S100A4 in A549 cells. The cell was stained with ATGA0384 (1:100). The secondary antibody (green) was used Alexa Fluor 488. DAPI was stained the cell nucleus (blue).

Human S100A4 antibody

Catalog Number: ATGA0384



ICC/IF analysis of S100A4 in HeLa cells line, stained with DAPI (Blue) for nucleus staining, Wheat germ agglutinin (WGA) with fluorescein conjugate (Red) for plasma membrane staining and monoclonal anti-human S100A4 antibody