

Human LSM5 antibody

Catalog Number: ATGA0385

PRODUCT INFORMATION

Catalog number

ATGA0385

Clone No.

AT25F8

Product type

Monoclonal Antibody

UnitProt No.

Q9Y4Y9

NCBI Accession No.

NP_036454

Alternative Names

u6 snRNA-associated Sm-like protein LSm5 isoform a, LSM5 homolog, u6 small nuclear RNA associated (S.cerevisiae), YER146W

PRODUCT SPECIFICATION

Antibody Host

Mouse

Reacts With

Human

Concentration

1mg/ml (determined by BCA assay)

Formulation

Liquid in. Phosphate-Buffered Saline (pH 7.4) with 0.02% Sodium Azide, 10% glycerol

Immunogen

Recombinant human LSM5 (1-91aa) purified from E. coli

Isotype

IgG2a kappa

Purification Note

By protein-A affinity chromatography

Application

ELISA,WB,ICC/IF

Usage

The antibody has been tested by ELISA, Western blot analysis, ICC/IF and Flow cytometry to assure specificity and reactivity. Since application varies, however, each investigation should be titrated by the reagent to obtain optimal results.

Human LSM5 antibody

Catalog Number: ATGA0385

Storage

Can be stored at +2C to +8C for 1 week. For long term storage, aliquot and store at -20C to -80C. Avoid repeated freezing and thawing cycles.

BACKGROUND

Description

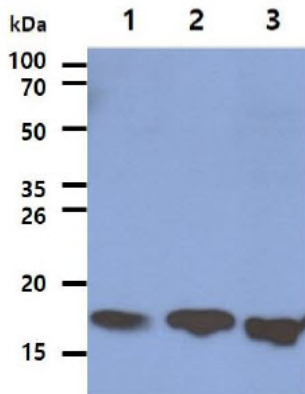
LSM5, also known as YER146W, is a 91 amino acid protein belonging to the snRNP Sm family. Localized to the nucleus, LSm5 has been found to play a role in the formation and function of the U6 snRNP. Specifically, LSm5 binds to the 3' end of U6 snRNA and facilitates U4/U6 duplex formation. Sm-like proteins were identified in a variety of organisms based on sequence homology with the Sm protein family. Sm-like proteins contain the Sm sequence motif, which consists of 2 regions separated by a linker of variable length that folds as a loop. The Sm-like proteins are thought to form a stable heteromer present in tri-snRNP particles, which are important for pre-mRNA splicing.

General References

- Salgado-Garrido J., et al. (1999) EMBO J. 18: 3451-3462.
- Achsel T., et al. (1999) EMBO J. 18: 5789-5802.
- Friesen WJ., et al. (2000) J Biol Chem. 275: 26370-26375.
- Eystathioy T., et al. (2002) Arthritis Rheum. 46: 726-734.

DATA

Western blot analysis (WB)



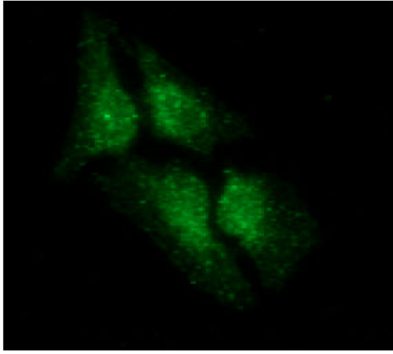
The Cell lysates (40ug) were resolved by SDS-PAGE, transferred to PVDF membrane and probed with anti-human LSM5 antibody (1:1000). Proteins were visualized using a goat anti-mouse secondary antibody conjugated to HRP and an ECL detection system.

- Lane 1. : HeLa cell lysate
- Lane 2. : K562 cell lysate
- Lane 3. : Jurkat cell lysate

Immunocytochemistry/Immunofluorescence (ICC/IF)

Human LSM5 antibody

Catalog Number: ATGA0385



ICC/IF analysis of LSM5 in HeLa cells line, stained with DAPI (Blue) for nucleus staining and monoclonal anti-human LSM5 antibody (1:100) with goat anti-mouse IgG-Alexa fluor 488 conjugate (Green).